

FAEIS Newsletter

April 6, 2010

In This Issue:

- [A Review of Forestry Data](#)
- [2009 Survey Data Available in Report Builder](#)
- [New Feature - Examples of Custom Reports](#)

A Review of Forestry Data

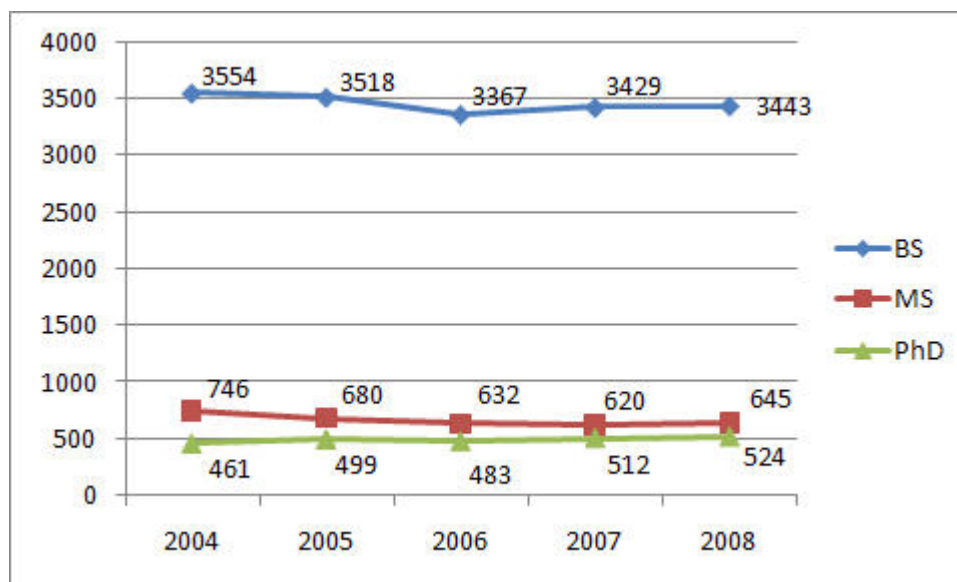
We last looked at the Forestry data in FAEIS in the [March, 2007 FAEIS Newsletter](#), so it's time for another look.

The disciplines included in the analysis are the Forestry Academic Area: 03.0501 - Forestry, General, 03.0502 - Forest Sciences and Biology, 03.0506 - Forest Management/Forest, Resources Management, 03.0508 - Urban Forestry, 03.0509 - Wood Science and Wood Products/Pulp and Paper Technology, 03.0510 - Forest Resources Production and Management, 03.0599 - Forestry, Other, and 14.3401 - Forest Engineering.

There are 49 institutions in FAEIS with baccalaureate enrollment in these disciplines, 41 with master enrollment data and 33 with doctorate enrollment ([see this list](#)). In order to develop a trend analysis, we limited the analysis to the institutions that had data for the five successive years of 2004-2008, which includes 32 institutions with baccalaureate enrollment, 26 with master enrollment data and 19 with doctorate enrollment.

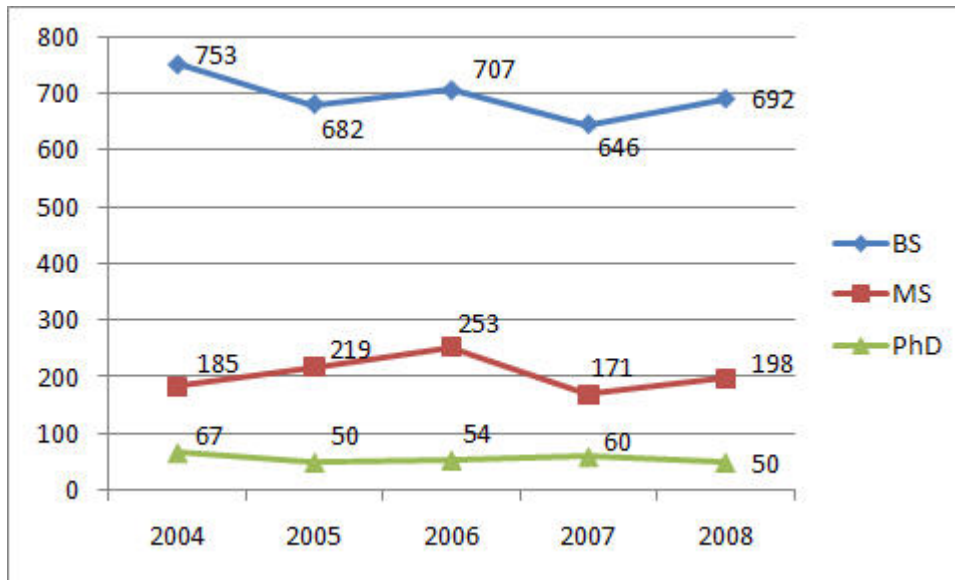
Here are the trends for enrollment and degrees awarded for BS, MS and PhD in the Forestry Academic Area:

**Enrollment in the Forestry Academic Area
for Institutions with 5 Consecutive Years of Data**



[Click here to see the list of Institutions represented by the chart above.](#)

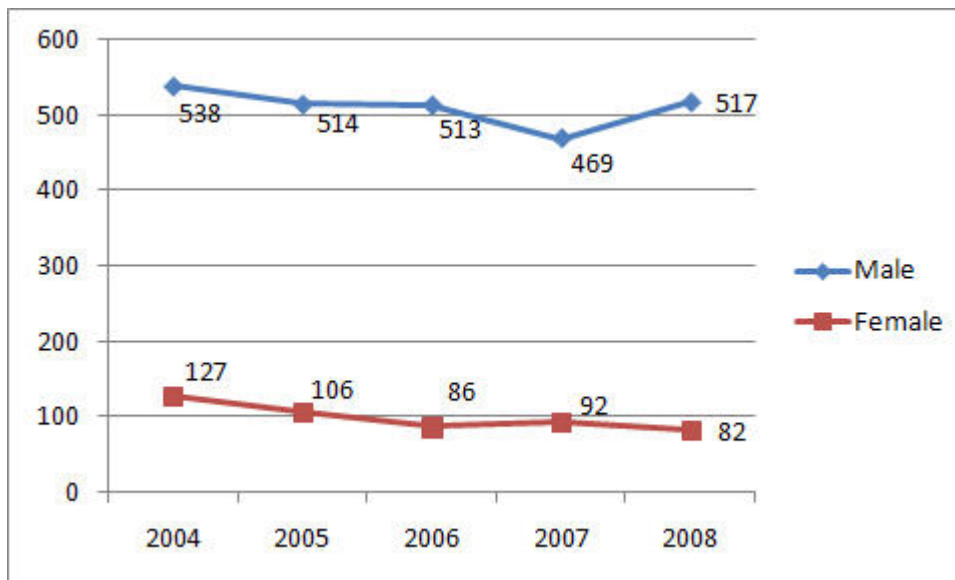
Degrees Awarded in the Forestry Academic Area for Institutions with 5 Consecutive Years of Data



[Click here to see the list of Institutions represented by the chart above.](#)

With student enrollment and degrees awarded data in FAEIS, you can also look at the gender and racial makeup of the forestry students. The chart below reviews the gender of students who were awarded baccalaureate degrees in the Forestry Academic Area. We only included those 26 institutions that had 5 successive years of gender data at the BS degree level. Here is the trend analysis:

Baccalaureate Degrees Awarded in the Forestry Academic Area by Gender for Institutions with 5 Consecutive Years of Data



[Click here to see the list of Institutions represented by the chart above.](#)

The FAEIS database also includes a wide assortment of data about faculty, including headcounts, age, and salaries by institution, discipline, appointment, rank, and tenure status. Here is some 2008 head count and salary data from institutions in FAEIS that have faculty in the Forestry academic area. Annual salaries are calculated by multiplying the monthly salary that is provided by the institution by twelve months.

2008 Faculty Annual Salaries in Forestry at All Institutions					
	Professor	Associate Professor	Assistant Professor	Instructor	Other Faculty
Average Salary	\$103,823	\$80,986	\$66,371	\$65,371	\$72,067
Headcount	206	99	71	7	9
27 Institutions Contributing to the Report					

2009 Survey Data Available in Report Builder

Preliminary data from the 2009 FAEIS Student and Faculty surveys are now available in FAEIS Report Builder. Approximately 85% of the expected data has been collected.

[Login to FAEIS Report Builder](#)

Examples of Custom Reports

This is a new section for the FAEIS newsletter, where we feature a set of reports recently prepared for a FAEIS user.

The following report was generated for Dr. Shane Ball, Data Analyst for USDA's National Institute of Food and Agriculture (NIFA), Science and Education Resources Development ([SERD](#)) Unit. Shane needed some data to present to NIFA Director, Dr. Roger Beachy, concerning degrees awarded to women, minorities and non-U.S. citizens in agriculture (01) Classification of Instructional Program Codes (CIPS).

Degrees Awarded in All Agriculture (01) Classification of Instructional Program Codes by Race, Gender and Citizenship at All Institutions in 2008			
	% Minorities	% Female	% Non-US Citizens
BS	11.5%	39.8%	0.8%
MS	17.9%	45.1%	15.9%
PhD	20.4%	36.2%	42.4%

Need a report?

[Ask FAEIS](#)



[Food and Agricultural Education Information System](#)

Virginia Tech, Mail Code: 0169
Corporate Research Center, Building VII
Blacksburg, VA 24061
Help Desk: (540) 231-4941
faeis@vt.edu, <http://faeis.usda.gov/>

**National Institute of
Food and
Agriculture**



Technology resources provided by [Agriculture, Human and Natural Resources Information Technology](#),
College of Agriculture and Life Sciences, Virginia Tech