

Best Management Practices for Boxwood Blight

Norm Dart, State Plant Pathologist, Office of Plant Industry Services, Virginia Department of Agriculture and Consumer Services

Chuan Hong, Professor and Extension Specialist of Plant Pathology Hampton Roads Agricultural Research and Extension Center, Virginia Tech

Adria Bordas, Extension Agent, Virginia Cooperative Extension, Fairfax County

Elizabeth Bush, Extension Plant Pathologist, Department of Plant Pathology, Physiology and Weed Science, Virginia Tech

Mary Ann Hansen, Extension Plant Pathologist, Department of Plant Pathology, Physiology and Weed Science, Virginia Tech

T. Mike Likins, County Agent, Chesterfield County Extension

Version 1, May 2014

PPWS-35NP



www.ext.vt.edu

Produced by Communications and Marketing, College of Agriculture and Life Sciences, Virginia Polytechnic Institute and State University, 2014

Virginia Cooperative Extension programs and employment are open to all, regardless of race, color, national origin, sex, religion, age, disability, political beliefs, sexual orientation, genetic information, marital, family, or veteran status, or any other basis protected by law. An equal opportunity/affirmative action employer. Issued in furtherance of Cooperative Extension work, Virginia Polytechnic Institute and State University, Virginia State University, and the U.S. Department of Agriculture cooperating. Edwin J. Jones, Director, Virginia Cooperative Extension, Virginia Tech, Blacksburg; Jewel E. Hairston, Administrator, 1890 Extension Program, Virginia State, Petersburg.

VT/0514/PPWS-35NP

Best management practices for Virginia retail nurseries WITHOUT boxwood blight

1. Avoid introduction

A. Take extra precaution when purchasing plant material.

- I. Buy from licensed nurseries and request phytosanitary certificates from vendors or a copy of their Boxwood Blight Cleanliness Program Agreement. For more information on the Boxwood Blight Cleanliness Program visit: <http://www.vdacs.virginia.gov/plant&pest/boxwoodblight.shtml>
- II. Inspect all newly purchased plant material upon receipt. If a shipment displays boxwood blight symptoms, report immediately to the Virginia Department of Agriculture and Consumer Services by calling: 804-786-3515.

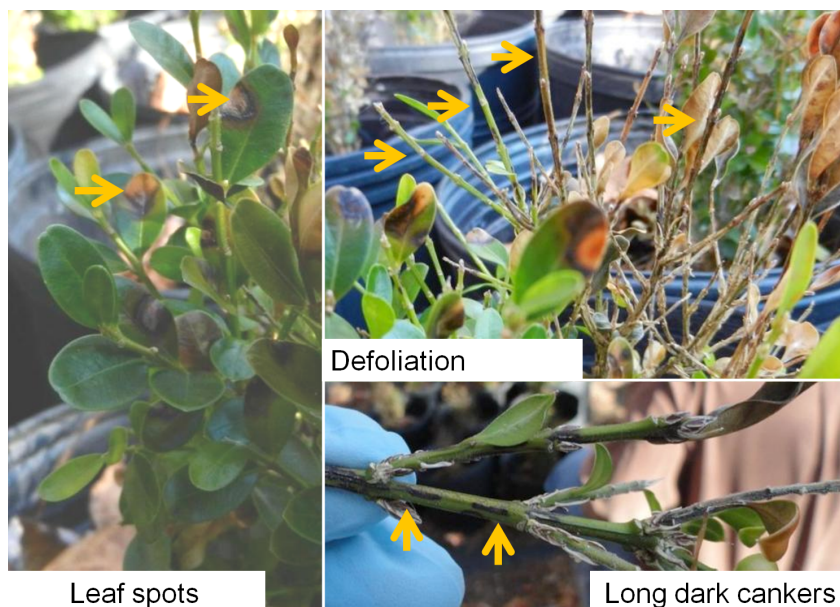


Figure 1: Familiarize yourself with the symptoms of boxwood blight.

- III. Create a holding area for all incoming boxwood and other plant materials.
 - a. The holding area must be at least 3 meters (approximately 10 feet) from other blocks of plants, but preferably farther. Alternatively, a physical barrier such as an enclosed greenhouse can be used.
 - b. Locate the holding area on concrete, asphalt, or weed mat to facilitate the cleaning of leaf debris and spilled potting mix.
 - c. Place all incoming plant material and new cuttings in the holding area for 30 days.

- d. Plant material should be inspected regularly for boxwood blight symptoms by trained staff.
- e. Clean plant debris by vacuuming, sweeping, or raking on a regular basis.
- f. Organize boxwood stock by source and keep stock well labeled so plant origin can be easily identified.
- g. Suspend use of all fungicides during the holding period.
- h. Consider placing “sentinel plants” that are highly susceptible to boxwood blight, such as English or American boxwood, in your holding zone to detect boxwood blight if you are holding more resistant cultivars.

B. Customer returns and traffic management

- I. Do not reintroduce plants to the nursery after they have left nursery property.

C. Shipping and receiving

- I. Locate unloading zone on a surface that can be easily swept and cleaned between deliveries.



Figure 2: Store plants on easy-to-clean surface such as weed mat over well drained gravel.

2. Cultural practices

A. Sanitation

- I. Minimize host plant debris accumulation by regularly cleaning the ground below plants.



Figure 3: Clean and sanitize boots between hoop houses or display blocks.

- II. Store plants on concrete, asphalt, or weed mat to facilitate the cleaning of leaf debris and spilled potting mix.
- III. Host debris should be bagged and incinerated or buried, not added to compost.
- IV. Sanitize tools as frequently as practical when working with boxwood. Shears, clipper, and other cutting implements should be treated with sanitizer between blocks, groups of plants, etc. Between hoop houses or large display blocks and at the end of the workday, tools such as shears, pruners, shovels, and rakes should be completely rinsed, dried, and a sanitizer applied following label instructions. See appendix 1 for a list of effective sanitizers.
- V. Boots should be cleaned and sanitized between hoop houses or large display blocks and at the end of the workday. Alternatively, Tyvek™ boot covers or similar products can be ordered from a commercial vendor and changed between display blocks.

B. Water management

- I. Maximize the use of drip irrigation and minimize the use of overhead irrigation. When using overhead irrigation, water plants so as to reduce leaf wetness period.
- II. Minimize standing water in host plant blocks.
- III. Avoid working with plants when they are wet.



Figure 4: Use drip irrigation to reduce leaf wetness period whenever possible.

3. Inventory, stocking, storage and displays

- A. Keep stock at a lower inventory and turn over stock more frequently.
- B. Consider selling stock that is resistant to boxwood blight. No boxwood are known to be immune to boxwood blight; only partial resistance is available. Contact your local county Extension office for a list of the more resistant cultivars.



Figure 5: When using overhead irrigation, water plants so as to reduce leaf wetness period.

4. Scouting

- A. Scout all host plants (Buxus, Pachysandra, and Sarcococca) in the nursery on a weekly basis.
- B. Symptomatic plants should be reported immediately to the Virginia Department of Agriculture and

Consumer Services. To report symptoms in nurseries call: 804-786-3515.

- C. Restrict access to and do not sell symptomatic boxwood until they have been examined and cleared by VDACS.

5. Recordkeeping

- A. Maintain records of the following for a minimum of 12 months:
 - I. Incoming host plants, including quantity and source(s)
 - II. Location of isolation area(s) for incoming host plants
 - III. Shipping records (dates, quantity, plants shipped, destinations)
 - IV. Inspection records
 - V. Personnel training (dates, attendees, subject matter, trainer)

6. Training

- A. Educate and train appropriate personnel to:
 - I. Understand the potential impacts of further spreading this disease and the importance of strictly following quarantine protocols when handling diseased plants in infested areas.
 - II. Recognize and report signs and symptoms of boxwood blight.
 - III. Learn about the disease biology.
- B. Develop site-specific sanitation protocols and best management practices in addition to those outlined in this document.
- C. Training sessions should be provided at least once each year.
- D. Contact your local Cooperative Extension office for information on training opportunities on boxwood blight.

Appendix 1: Recommended sanitizers for disinfesting pruning tools and other equipment of the boxwood blight pathogen

Active ingredient	Brand name	Rate	Recommended Contact Time for Best Efficacy
Sodium hypochlorite (5.25%)	Clorox, other brands of household bleach	Prepare 1:9 solution. Must be prepared fresh.	5 min. for tools; 10-15 min. for equipment surfaces
Hydrogen dioxide	Oxidate, Zeritol	Prepare 1:100 – 1:300 solution for clean, non-porous surfaces. Prepare 1:50 solution for unclean surfaces.	5-10 min.
Hydrogen peroxide, peroxyacetic acid, and octanic acid	Xeroton 3 (X3)	Prepare 1:500 – 1:1,500 solution for clean, non-porous surfaces. Prepare 1:150 solution for unclean, non-porous surfaces. Prepare 1:300 – 1:1,000 solution for tools.	10 min.
Phenolic compounds (O-benzyl-p-chlorophenol)	Lysol Brand Concentrate Disinfectant	Prepare solution of 1.25 – 2.5 oz/gal.	At least 5 min.

Note that some disinfectants are corrosive. It is advisable to oil tools after treatment. Also, sanitizers will be most effective if surfaces are free of plant debris and soil prior to treatment.