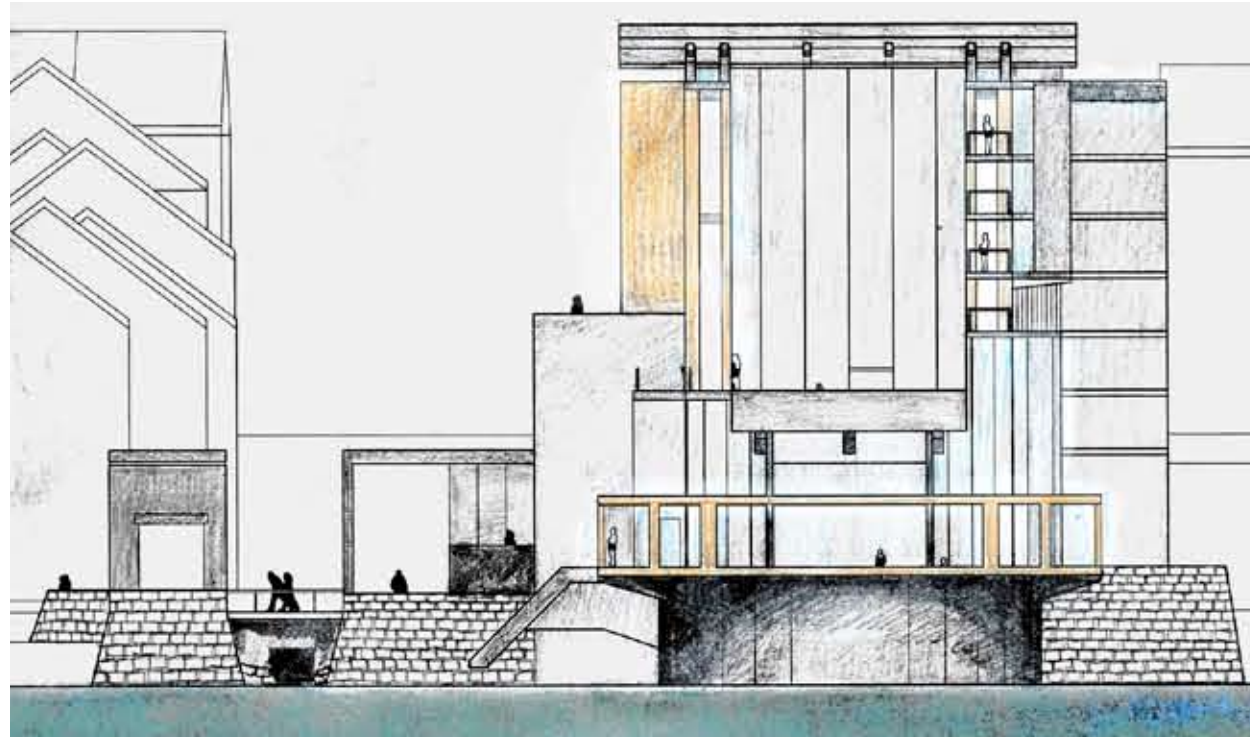
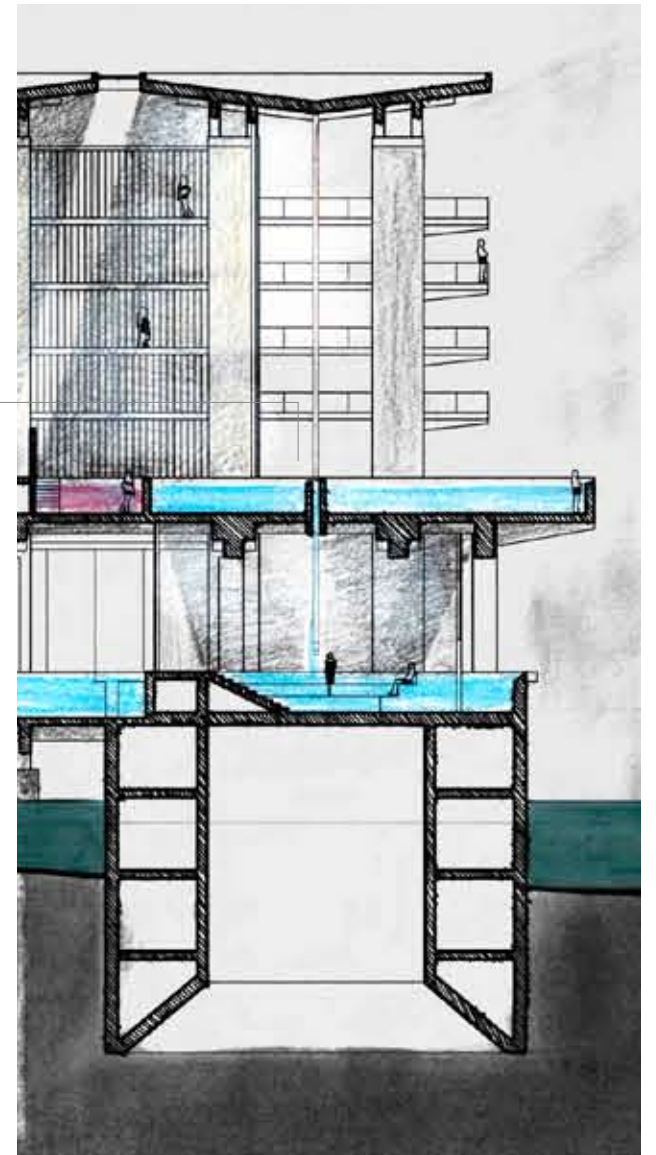
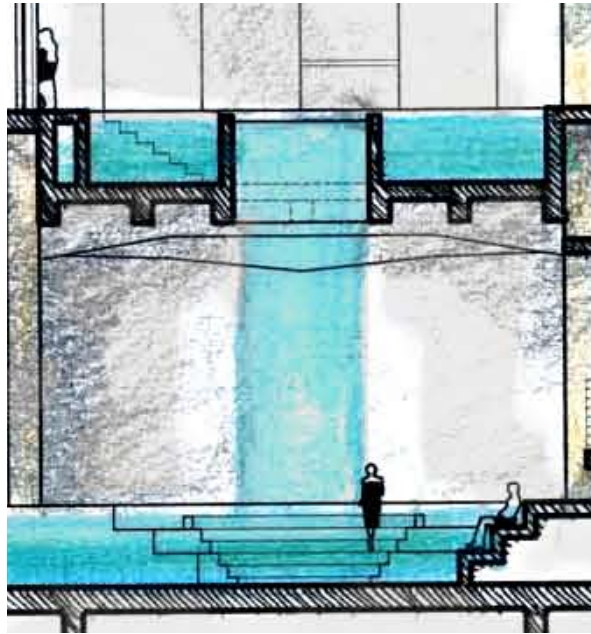


## CASSION AND OUTLOOKS

An island is built by a 50' diameter caisson structure in the middle of the Potomac River with the intention of receiving series of columns from the ground. The island is the point where body treatment terminates and the new journey for the water begins. 6'-0" x 0'-4" water curtain flows down to the last body treatment tub in the island through the linear opening from the pool above. The passages from main stair to each treatment pool extend out to the view of the river. At the end of the passage, the slab is cantilevered out from the last column inviting people to come out to see the scenic view of the Potomac River. The building is situated toward the river and the island is similar to fulcrum in the action of levers. The building resembles the downward dog position in yoga. Legs are positioned on land, and hands touch the bottom of the river as the head looks out east where the sun rises.

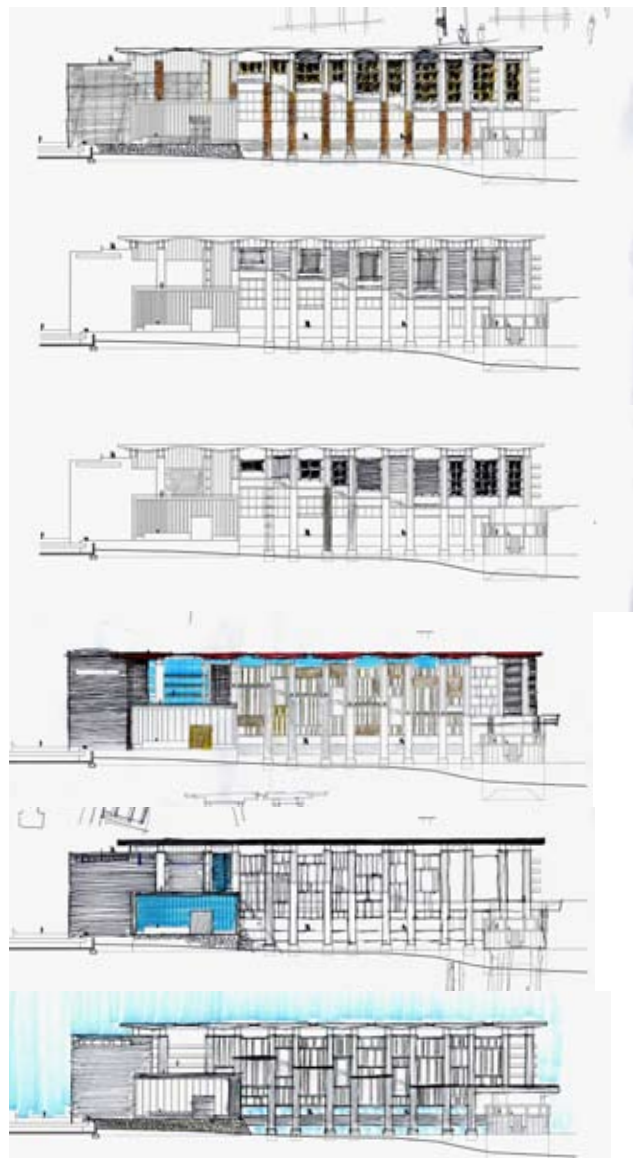
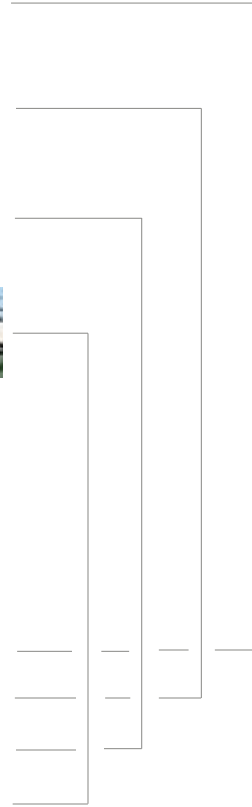
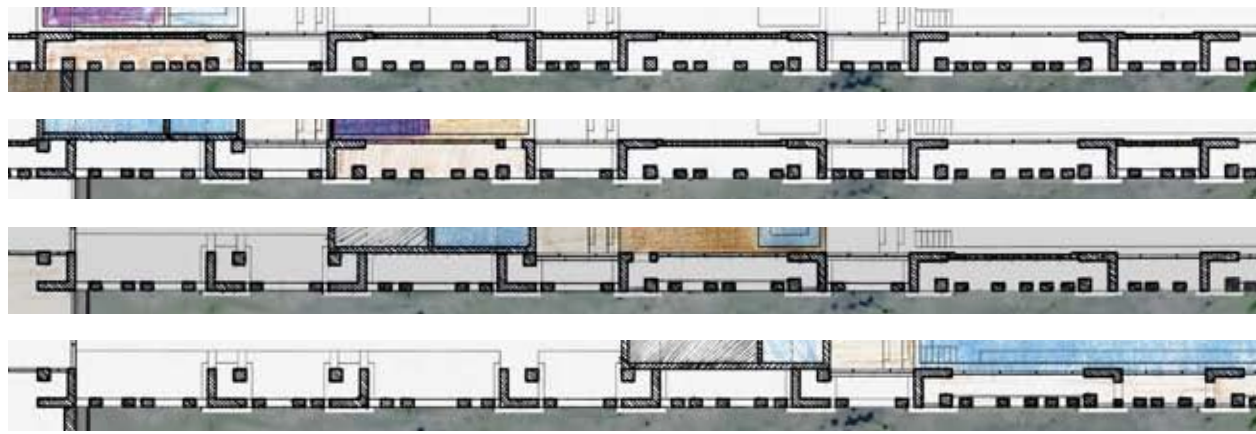




## SKIN

The intent of this project is to create distinctive skin that presents the character of architecture as a mediator between man and nature. The skin of building is composed of weaved columns that are supported by major monumental piers. This architectural development extends the symbolic character of columns into intertwined column layers on surface of the building and it generates a unique body treatment environment. The users in body treatment pools perceive outside nature through the skin that is created by many layers of tectonic objects. The north wall is constructed in two layers. One is colonnade wall with glazing and the other is vertical maple fin layer separating passage from treatment pools. The south side has additional solid outside layer protecting the building from strong south sun light.





## DETAIL

Frascari stated about detail “A function of detail in a design becomes clear by re-presentation, that is, by re-use. The detail often appears incomplete and vague in its structuring principle. But unifying in itself function and representation, the re-use of detail becomes creative catalyst.”<sup>6</sup> In this project, sand stone column cladding detail is repetitive throughout north and south façade with exposed concrete ledge. Cladding is assembled by anchors and clips but also supported by concrete ledge to represent honesty of material. Metal pieces which hold stone cladding will rust with time. In order to hold cladding safely, concrete ledge is detailed in drawings as a relief self for cladding material weight. Vertically emphasized cladding pattern is weaved by horizontal concrete ledge presenting the character of reinforced concrete structure. Through these steps, the project is merging onto dimensioning, cutting, and making process that shows the craftsmanship on defined scale. The detail drawings clarify the essence of architecture on joinery and assembly since architecture comes from totality of constructing process. Understanding the process of making joints is not only to cut and bond materials in certain size and shape but also to perceive the metaphysical meaning of invisible essence in visible phenomenon.

6. Frascari, Marco. “The Tell-The-Tale Detail.” In *Theorizing A New Agenda For Architecture An Anthology of Architectural Theory 1965-1995*. Edited by Kate Nesbitt. (New York: Princeton Architectural Press, 1996). 509.



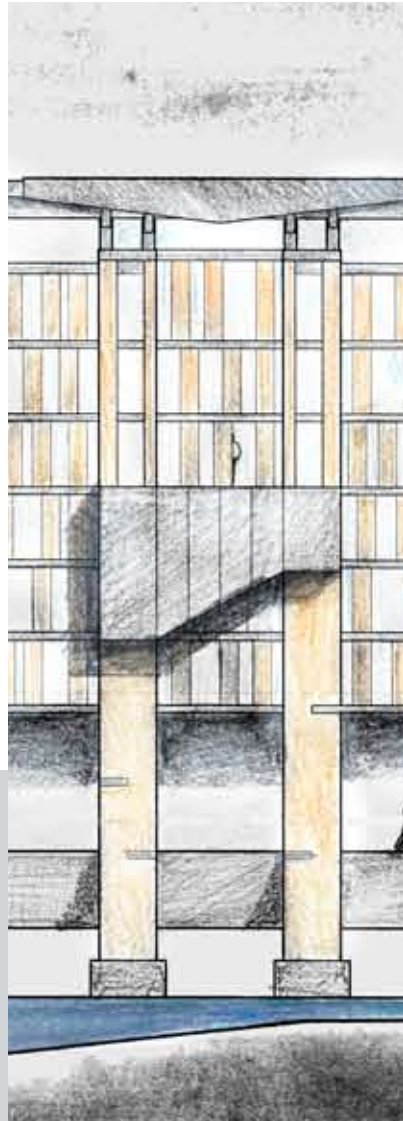
## ACKNOWLEDGEMENT

I would like to thank first of all my parents for their love and support. My father's guidance and example of his love and devotion to architecture have been an inspiration. My mother has been a strong support from the beginning. Special thanks to my wife who has been by my side all the way.

## PHOTO CREDITS

Unless otherwise noted, images are reproductions of original drawings, renderings, and photographs by the author.

1. Adobe Stock Photos, Adobe ID 164ASPDD430340
2. Adobe Stock Photos, Adobe ID 164ASPNY442763
3. Adobe Stock Photos, Adobe ID 164ASP28724628
4. Adobe Stock Photos, Adobe ID 164ASPDD436622
5. Adobe Stock Photos, Adobe ID 226ASP5043644417
6. Army map of the seat of war in Virginia, showing the battle fields, fortification, etc. on & near the Potomac River Drawn by J. G. Bruff. Lith. of P. S. Duval & Son, Philada. Bruff, Joseph Goldsborough, 1804-1889. published New York and Washn., D.C., J. Disturnell and Hudson Taylor, c1861.
7. Adobe Stock Photos, Adobe ID 226ASP5043644417
8. Adobe Stock Photos, Adobe ID 226ASP6890344475
9. Adobe Stock Photos, Adobe ID 317ASP844-43906027
10. Adobe Stock Photos, Adobe ID 164ASP944068756-443
11. Adobe Stock Photos, Adobe ID 226ASP5374444312.
12. Adobe Stock Photos, Adobe ID 317ASP879-43379227
13. Adobe Stock Photos, Adobe ID 164ASPDD447941
14. Adobe Stock Photos, Adobe ID 317ASP879-43379285
15. Adobe Stock Photos, Adobe ID 226ASP6535749975



## BIBLIOGRAPHY

Asman, Carrie. "Ornament and Motion: Science and Art in Gottfried Semper's Theory of Adornment." In *Herzog & De Meuron, Natural History*. Edited by Philip Ursprung. 385-397. Montreal: Lars Muller Publishers, 2002.

Bachelard, Gaston. *The Poetics of Space*. Translated by Maria Jolas. Boston: The Beacon Press, 1964

Frascari, Marco. "The Tell-The-Tale Detail." In *Theorizing A New Agenda for Architecture An Anthology of Arhcitectural Theory 1965-1995*. Edited by Kate Nesbitt. 498-514. New York: Princeton Architectural Press, 1996.

Hvattum, Mari. *Gottfried Semper and the Problem of Historicism*. Cambridge, England: Cambridge University Press, 2004.

Leatherbarrow, David, and Mohsen Mostafavi. *Surface Architecture*. Cambridge, Massachusetts: The MIT Press 2002

Lynch, Kevin. *The Image of The City*. Massachusetts: The MIT Press, 1960.

Mori, Toshiko. *Immaterial/Ultramaterial, architecture, design, and materials*. New York: George Braxiller, Inc. 2002.

Semper, Gottfried. *The Four Elements of Architecture*. Cambridge, England: Cambridge University Press: 1989.