

LD  
5655  
A761  
C48  
no. 557  
VP/  
Spec

# How to Choose and Hang Pictures

It's your pictures, wall hangings, hanging shelves and accessories that really pep up your room. By clever selections and use of them, you can make your room interesting and individual.

## Selecting Pictures -

Good pictures are a source of inspiration for developing the colors to be used in your room and can be a pleasure to you. A picture, however, is only as good as its frame and placing. Even inexpensive pictures are important if they are framed in an unusual way.

## What kinds of pictures should you use?

Colonial portraits, Early American, historical scenes, Currier and Ives prints, Victorian flower prints and Audubon bird prints belong to traditional rooms. Modern paintings and prints are best in modern homes. Chinese pictures, seascapes, black and white etchings, can be used in any setting. First of all you should enjoy the pictures you use in your room. When you no longer enjoy your pictures and wall decorations, replace them with

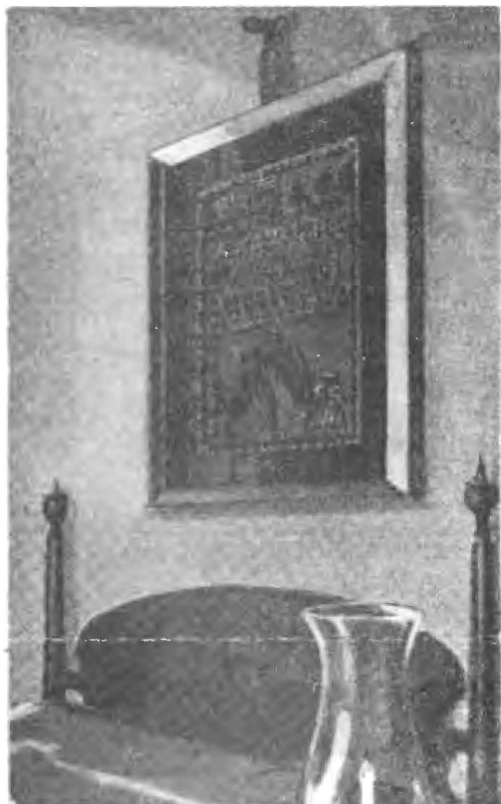


Figure 1.

others. Your taste is expressed in the type of wall decoration you use. You can use pictures of hobbies, of places you have been, of things you have made, such as, samplers (Figure 1.) or applique or muslin. Colorful crayon pictures you have made at school, maps, pictures of houses, planes, boats and ship pictures may appeal to you boys while you girls may like Godey, flower and bird prints. Where should pictures

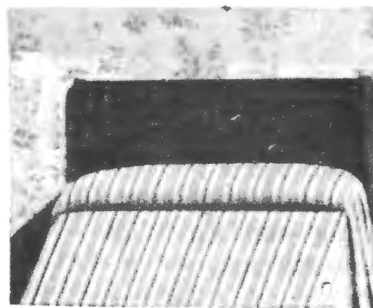


Figure 2.

be used in your room? You can use a picture or pictures at the head of the bed if the wall is plain or none at all if the wall is papered. (Figure 2.) You may want to gather your treasured pictures together and thumb tack them to a painted insulating board 1/2-inch thick if wall paper is plaid. Paint board to contrast with paper. A mirror will look best as a wall decoration over a chest when the wall is patterned.



Figure 3.

A bird print in a narrow frame (Figure 3.) will be of interest when hung over a desk-chest on the plain wall.



Figure 4.

In (Figure 4.) two strips of Chinese wall paper were pasted on 1/2 inch insulating board to hang over the mantel. A hanging shelf, a bulletin board of your treasures, or a matted picture (Figure 5) is equally appropriate to hang over the desk.

What is the best height to hang pictures? Pictures should be hung at the eye level or below. Hang the pictures close enough to the piece of furniture or mantel so that the two appear as a single unit. Must pictures be centered



Figure 5.

on the wall? They are usually centered for the most restful effect. Sometimes a picture can be hung off center and balanced by a tall massive plant or foliage arrangement (Figure 6.) What size should pictures be? A picture or



Figure 6.

group of pictures should always be in proportion to the wall space and to the furniture over which it is hung. (Figure 7.) Never hang pictures in stair-step fashion. Don't use small pictures on a large wall. You can extend pictures with the use of mats made of Bristol board. These usually are best with narrow frames. When to use mats - Water colors, etchings, lithographs and your crayon drawings will appear to better advantage when matted.



Figure 7.

They keep the frames from over-shadowing the pictures. As a rule, use a mat in a neutral tone between color in picture and the color of the wall. White grey, and ivory are most often used. Use paper matting board or block mat painted on glass for hunting scenes, heavy bird prints and old embroideries. Materials often used are burlap, natural or bleached linen stretched over paper boarding for water colors and sketches that are bold in style. As you will notice in the pictures below 1/4-inch to 1/2-inch of the mat of picture shows on the size of the mat. (See MK-158, HOW TO FRAME PICTURES for directions.)

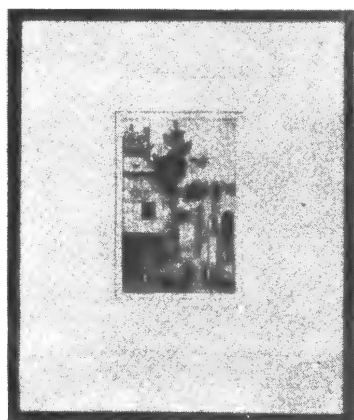


Figure 8

BLACK AND WHITE ETCHINGS or block prints need a wide mat, narrow black frame, and glass. A floral print may have colored mat and frame. Bottom of mat is wider than top and sides.



Figure 9

A MATTED PICTURE with glass may be hung without a frame by using a grip-type holder (Braquette) that can be adjusted to any size picture. They're chrome or Lucite, cost about \$1.50.

Frames - The frames should harmonize with the picture in character, size, scale and color. The larger the area of the picture, the wider the frame may be. Narrow frames are most often used on pictures with mats. For suggested ways to frame see Figures 8, 9, 10, and 11.

How to Hang - Place a screw eye one third the way down from the top on each side of the picture frame. Stretch the picture wire tightly through the screw eyes, cut and fasten securely. Determine just where the picture should hang, hold wire and mark for picture hanger.

\* \* \*

(Pictures Courtesy, Farm Journal and Better Homes and Gardens.)



Figure 10

Use a picture hanger instead of a nail to protect your wall. Use two 20 pound picture hangers side by side for hanging a mirror.

Ask Yourself Three Questions - Is the picture or group of pictures the correct shape and size for the wall space and furniture? Have you hung only the pictures that seemed necessary? Are all the pictures and other wall decorations hung without the wire showing?



Figure 11

Circular 557

September 1952

Virginia Polytechnic Institute and the United States Department of Agriculture Cooperating: Extension Service  
L. B. Dietrick, Director, Blacksburg, Virginia

Printed and distributed in furtherance of the Acts of Congress of May 8 and June 30, 1914