

## Notes on the Foundations of Architecture

D. C. Cruze

Thesis submitted to the Faculty  
of the Virginia Polytechnic  
Institute and State University  
in partial fulfillment of the  
requirements for the degree of  
**Master of Architecture**

---

O. C. Cruze, Chairman

---

Salahuddin Chowdhury

---

Frank Werner

October 1989  
Blacksburg, Virginia



The project is an attempt to define what is critical to an American house; a house coming into being in 1990.

The site is in southwest Virginia, on the edge of a town which is in the process of being suburbanized - a cancer which any American architect operating today must confront.

Nine houses are placed on twenty-seven acres of rolling hills. Each house is surrounded by three acres. This size was chosen because it forces one to deal with the land in a non-suburban way.

Primary access to each house is by car.

The critical relationships in the overall plan are between the houses and between the houses and the land.

The construction system was designed realizing that in America today, there is little or no craft of construction remaining. The house is a simple concrete frame with infill panels bolted to a steel stud system. The panels would be prefabricated in a shop. Panels include sheet metal, wood, glazed and venting.

The drawings and model photographs are merely indicators of the architecture, not the architecture. The drawings relate to dimensioning and constructing. The photos are an attempt to show the quality of space desired. Obviously there is no way to directly verify the propositions without building.

F R O J E C T

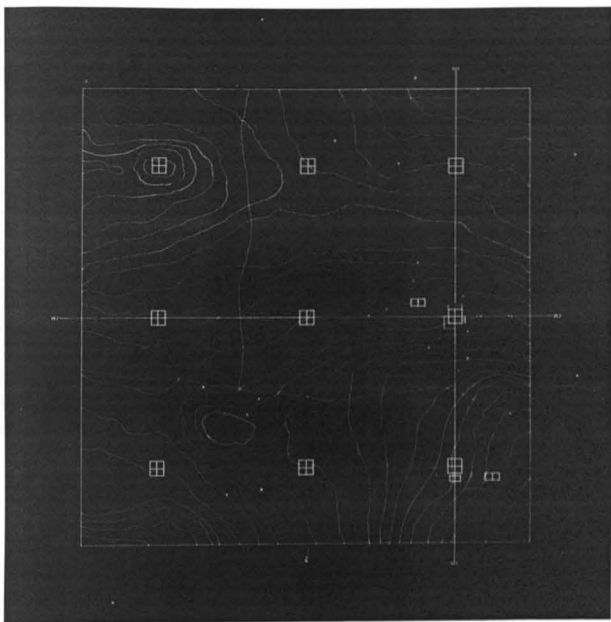
50% COTTON FIBRE

THEFTALIN DOND

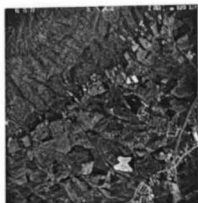
WILLITAN

50/60 GRAM

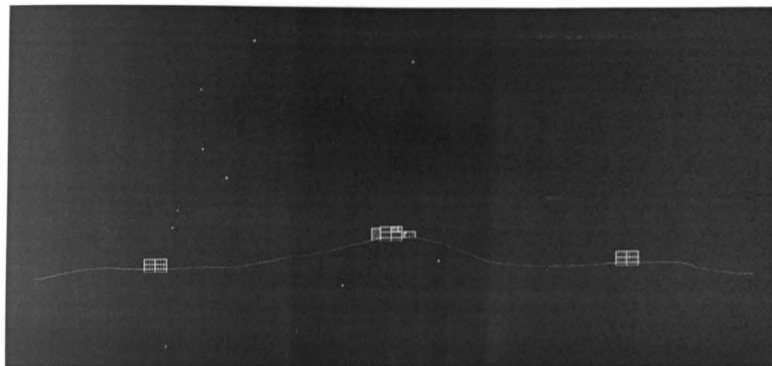
H O U S E Q 6



7



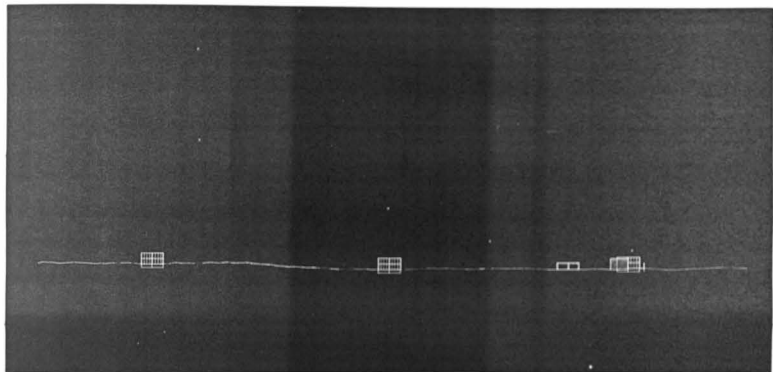
O V E R A L L   S I T E   S E C T I O N   S I . S I



| °

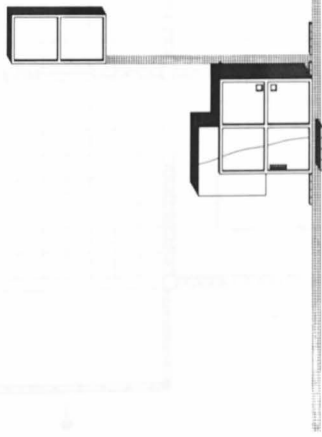


S I T E   T O P O G R A P H Y



| 9

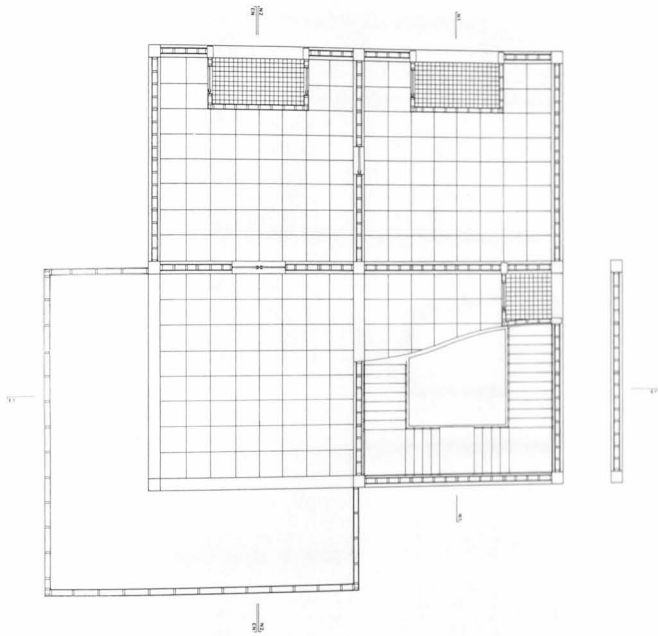




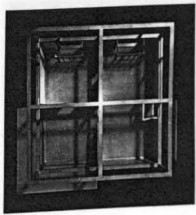
10



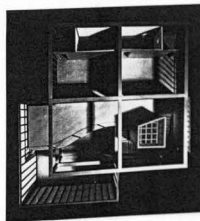
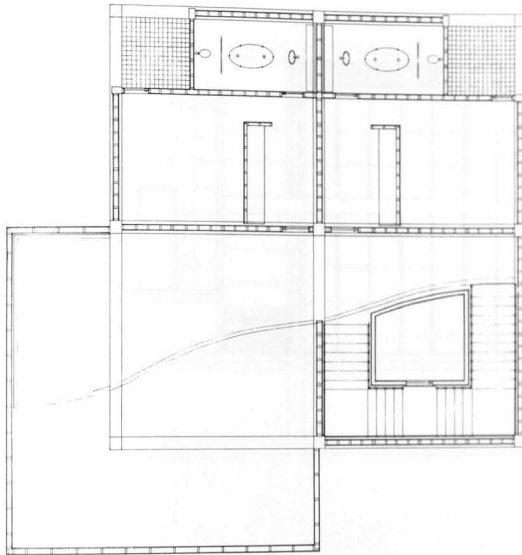
F I R S T F L O O R P L A N

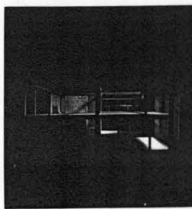
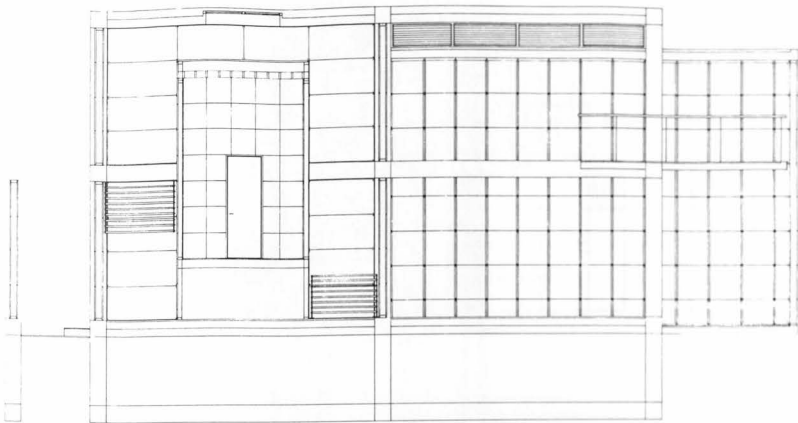


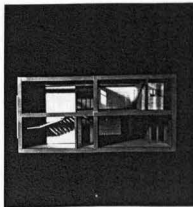
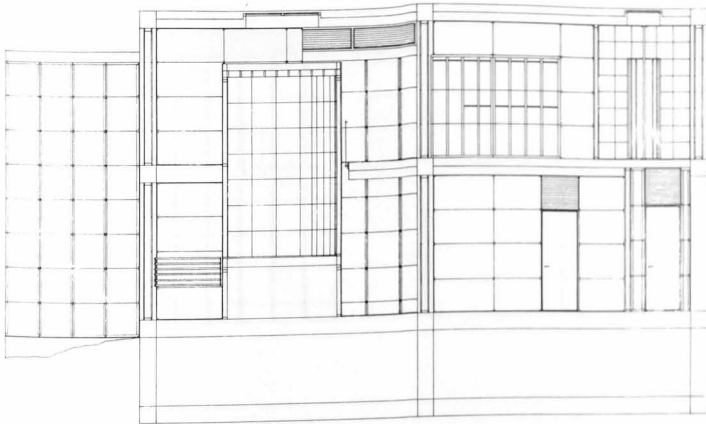
11

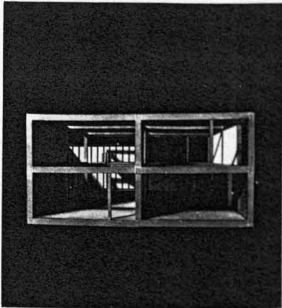
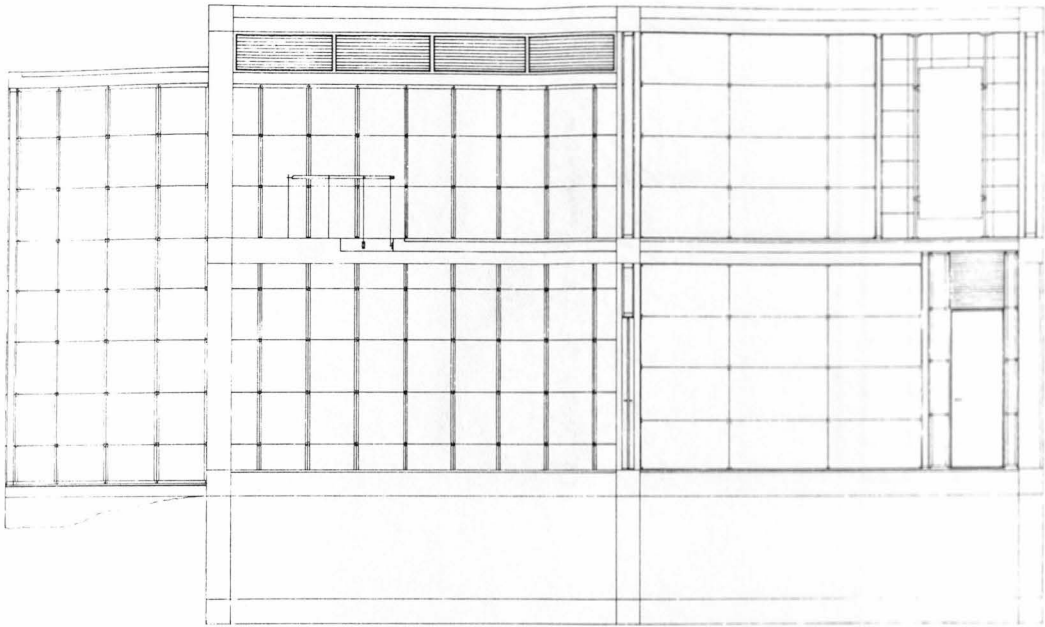


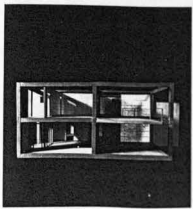
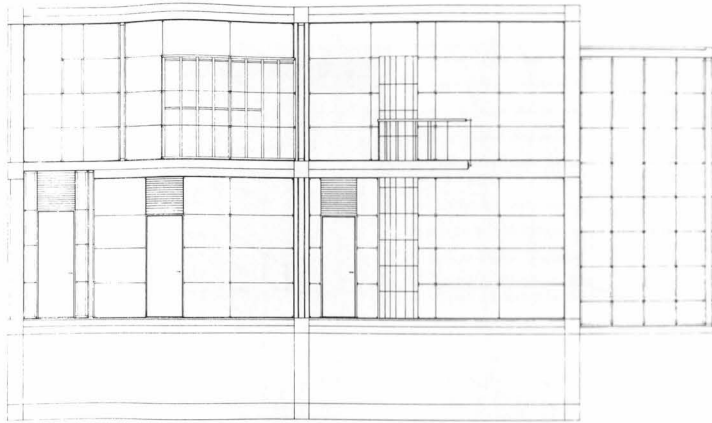
P L A N P E R S P E C T I V E



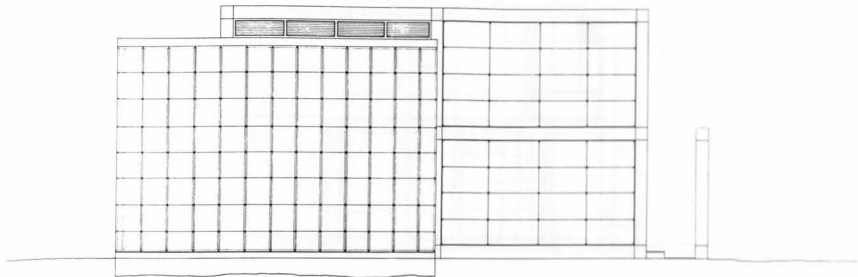




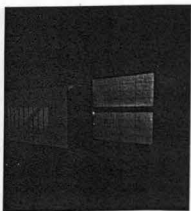




N O R T H E L E V A T I O N

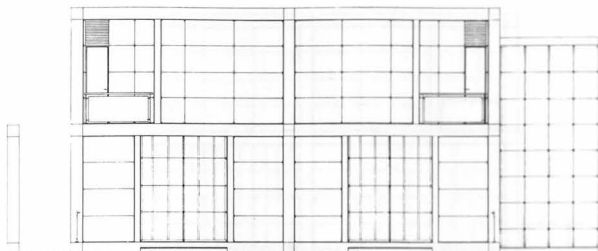


17



E L E V A T I O N P E R S P E C T I V E

S O U T H E L E V A T I O N

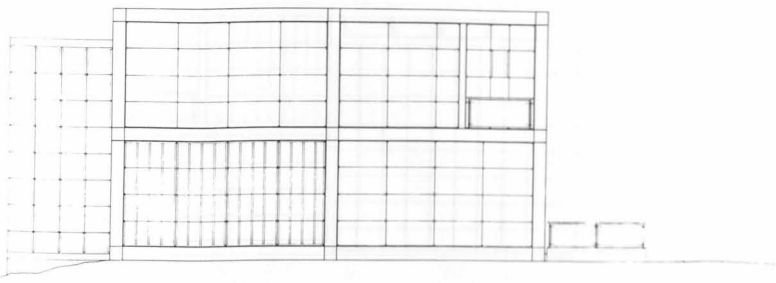


10



E L E V A T I O N P E R S P E C T I V E

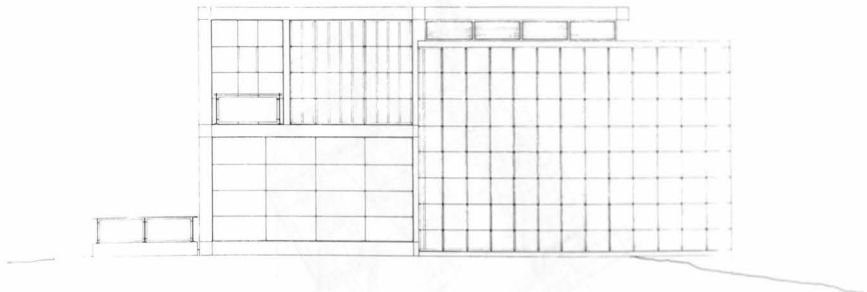
E A S T E L E V A T I O N

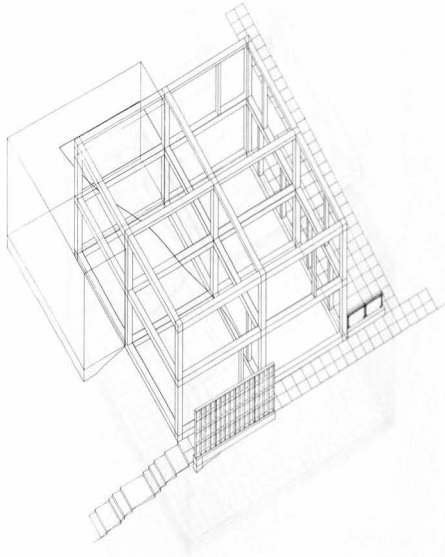


19

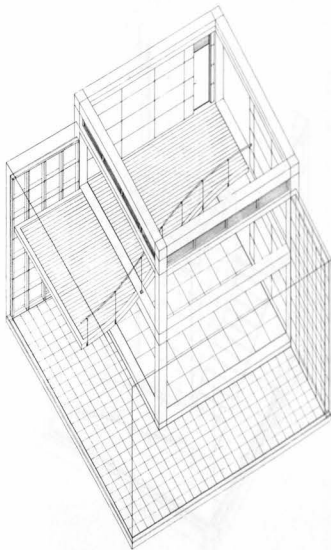


E L E V A T I O N P E R S P E C T I V E





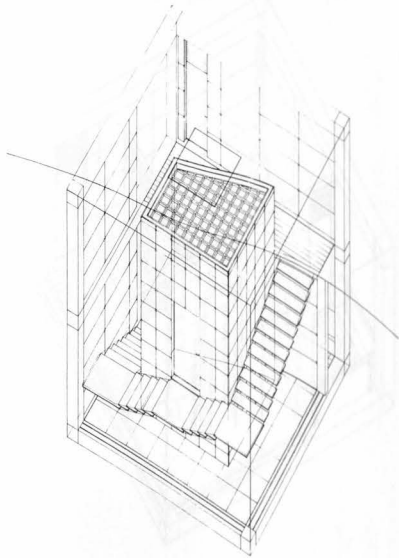
A X O N O M E T R I C : L I V I N G R O O M

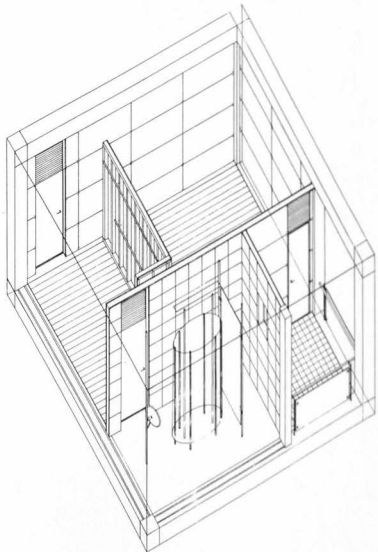


22



A E R I A L P E R S P E C T I V E





| 24



**The vita has been removed from  
the scanned document**