

ONE VIEW INTO THE HOUSE

by

James Christopher Hubbard

Thesis submitted to the Faculty of the  
Virginia Polytechnic Institute and State University  
in partial fulfillment of the requirements for the degree of  
MASTER OF ARCHITECTURE

APPROVED:

---

Olivio C. Ferrari, Chairman

---

Robert Graeff

---

Salahuddin Choudhury

December 1983

Blacksburg, Virginia

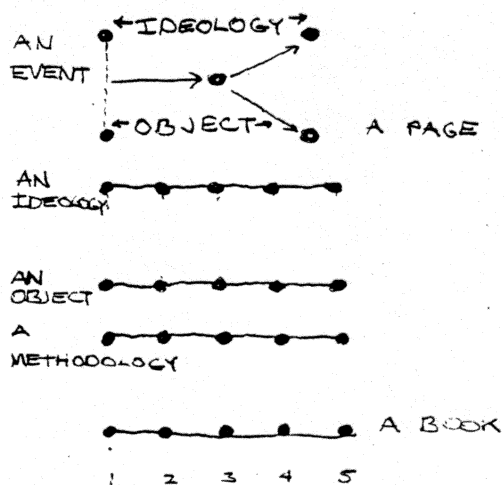
NO 8-21-57

## TABLE OF CONTENTS

INTRODUCTION	1
THE SITE	2
THE HOUSE	3
MAN'S LIVES	5
THE BUILDING	14
VITA	17
ABSTRACT	

## Introduction

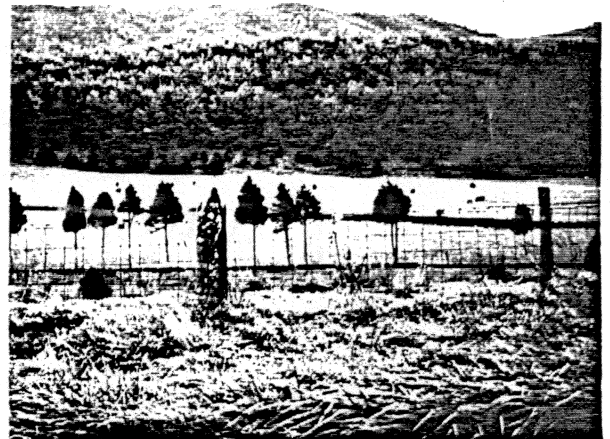
What follows is a dialogue between two worlds in the making of a house. First, there is a series of beliefs about the house. Second, there are moments of the object exploration that intersect in some way with the ideology.



At some points of intersection, there is a verbal response about the object exploration.

## The Site

The site is the place of interaction between the architect's values and the fabric inherent in the environment. The architect's values are what see the fabric in the environment.



The mountain region speaks of the verticality of a building both in the range of view and in the morphology. The rock outcroppings speak of the concrete block.

## The House

The point of the house is a place for man to dwell. So such a place should be considerate of man. To be considerate of man means to make a judgement of what is important for man.

One formulation of what is important for man is to see man's needs for his lives: physical, soul and social. In this formulation, nature is a medium for the fulfillment of his needs.

"God has given to man all that is necessary for them to accomplish their destinies. He has provided a social form as well as a human form. And these social organs of persons are so constituted that they will develop themselves harmoniously in the clean air of liberty"

Frederic Bastiat

"When we reflect on life we perceive that only through solitary communion with nature can we gain an idea of it's richness and meaning. We know that in such a contemplation lies our true personality."

Cyril Connolly

So, for a house to be considerate of man, it must be considerate of his lives, or allow them to be protected and nurtured.

## Man's Lives

### Physical

Man's body needs protection and nurture. The house can be a place where the body is protected from the turbulence of nature: cold, hot, humidity, aridity, wind, wet and snow. The house can also provide the fresh air and sunlight needed for the growth of the body.

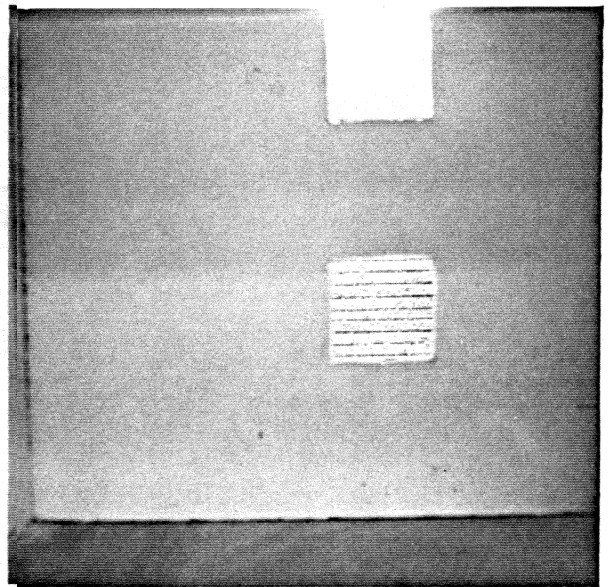
### Soul

Man's soul is a terribly complex organ, yet the house can be a place where it can be free to be eloquent.

It can be a place of quiet and solitude where the anxiety of society may be vaporized by thought.

"Serenity is the true and great antidote against anguish and fear. Today, more than ever, it is the architect's duty to make of it a permanent guest in the home, no matter how sumptuous or how humble."

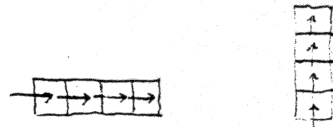
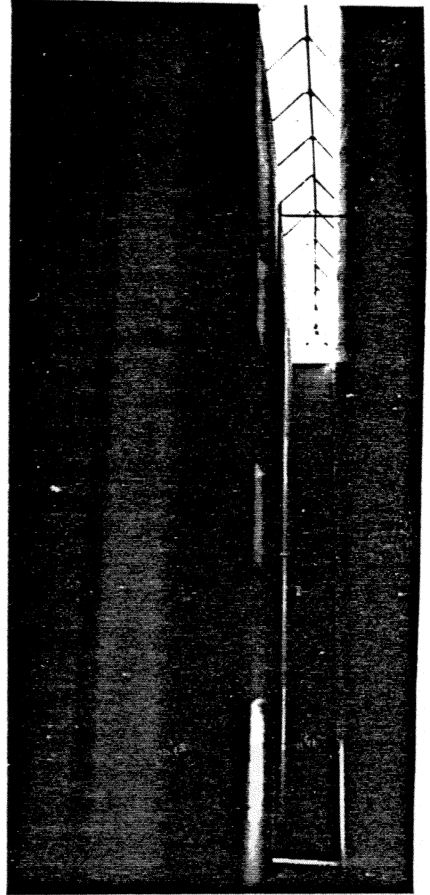
Luis Barragan



The quality of light may quiet a room.

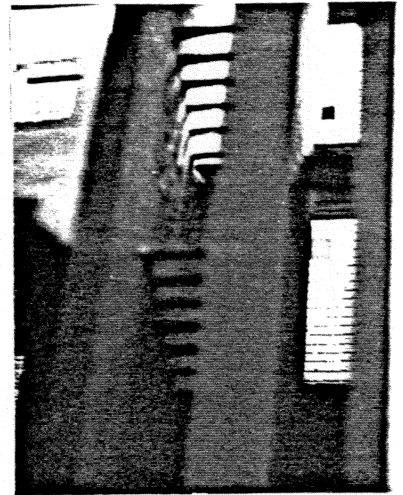


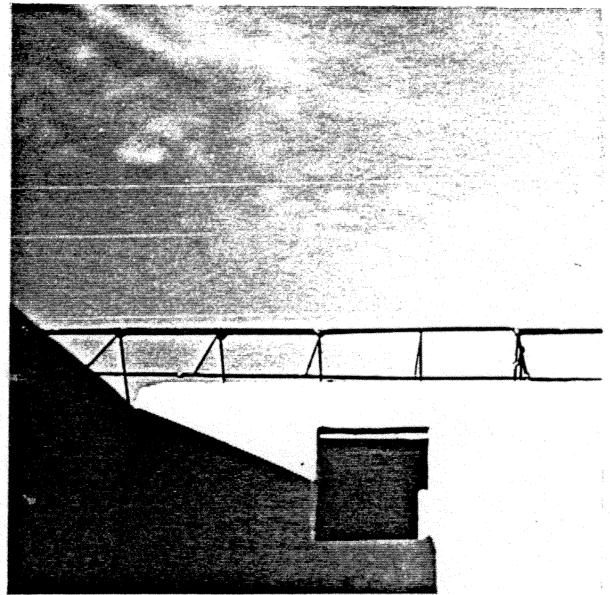
The house can be a place where one can have privacy and engage in creative and spiritual thought.



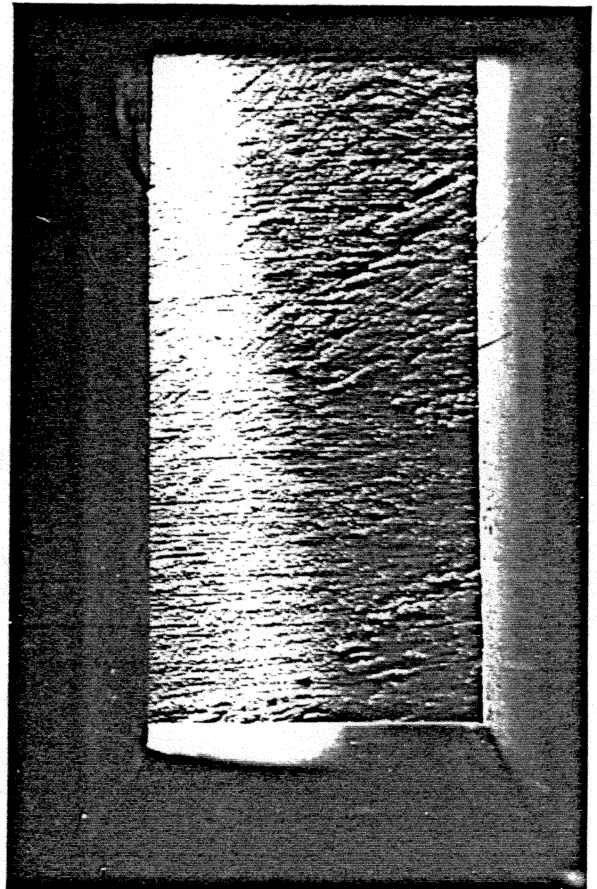
PRIVACY: HORIZONTAL VERTICAL

The events leading to a place may increase the sense of privacy of that place.

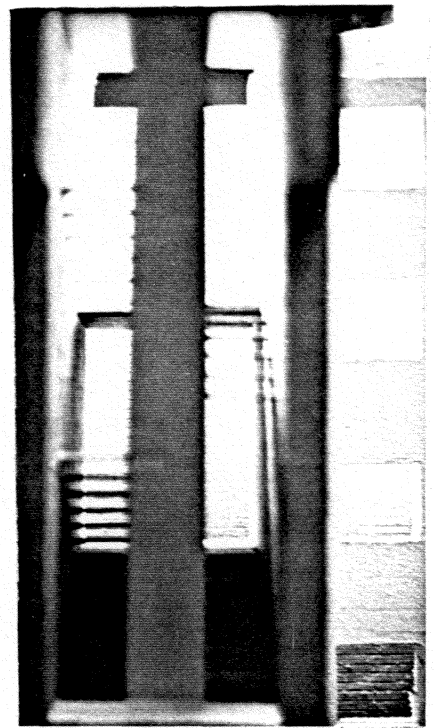




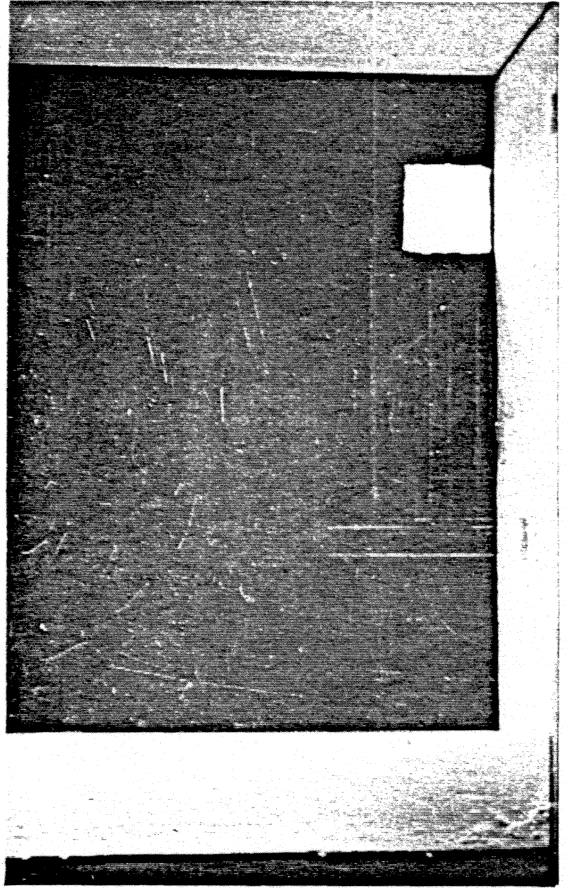
It can be a place of serenity and solitude, where the infinitude of the private man is glimpsed.



The serenity of a place might be enhanced by light which arrives from a quiet place.



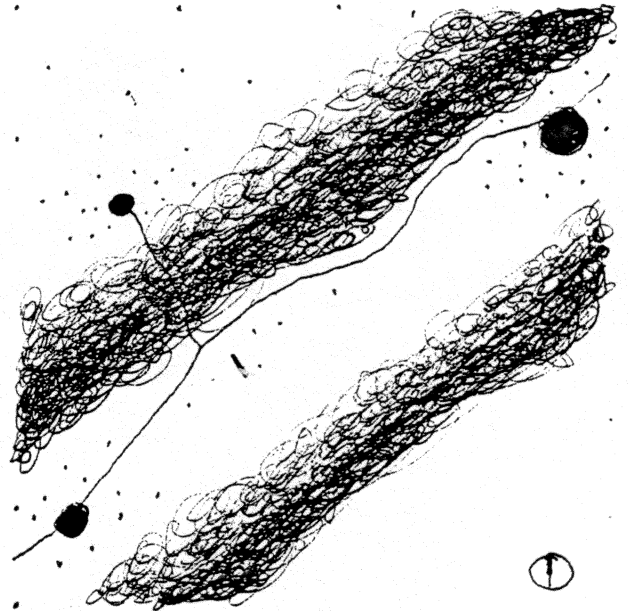
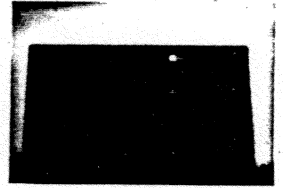
The house can also be a theater where nature is enjoyed.



The way the sky and the earth are framed either enhances or destroys nature's presence.

## Social

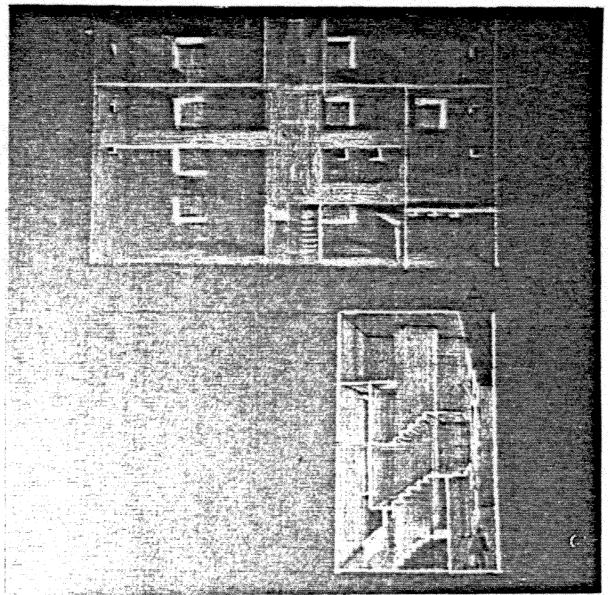
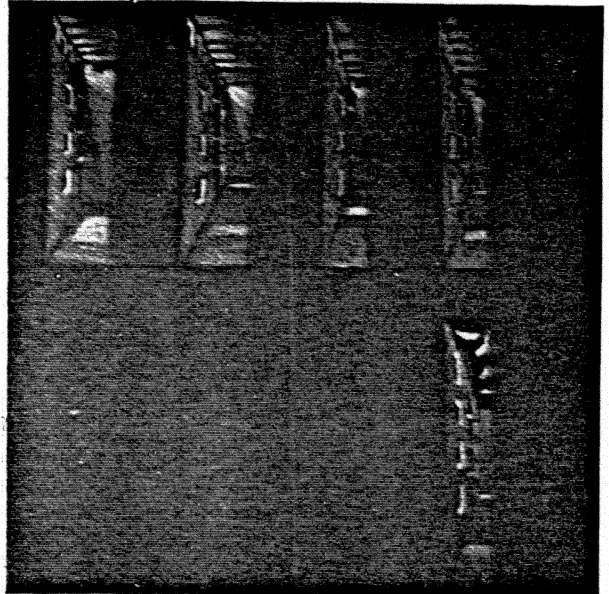
The house can provide a stage to enjoy one's social life. It can also be a cultural marker or a reference which may reinforce the meaning or richness of a culture.



A wall might be a signal for a town. A wall might be a symbol of privacy.

## The Building

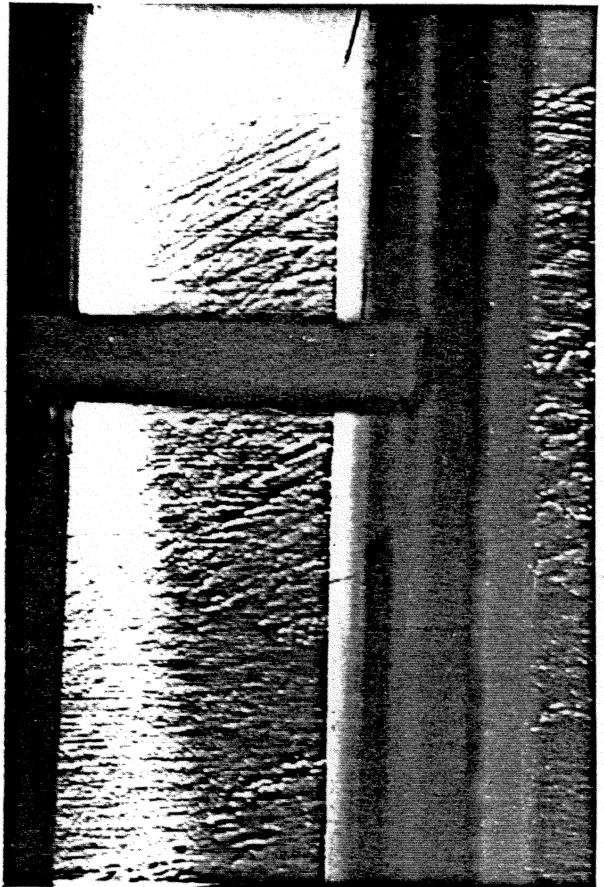
The building is the vehicle for the house. It has at its disposal, material, geometry, light, sky and earth.



Each part of the building can be an extension of the house.

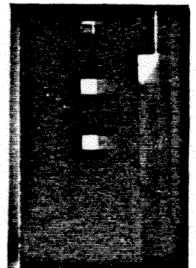


It can be a simple  
technical statement yet  
a complex aesthetic  
statement.



A wall can be more than  
a boundary.

The physical building is  
only the beginning of  
the house; where it  
ends up is up to the  
conscience of the  
architect.



**The vita has been removed from  
the scanned document**

ONE VIEW INTO THE HOUSE

By

James Christopher Hubbard

(Abstract)

A dialogue between two worlds in the making of a house: a series of beliefs about what a house should do; some moments of an object exploration that intersect in some way with the ideology.