

# Learning Experiences for empowerment, resilience, and engagement

**Convener:** David Brinberg, Professor of Marketing

**Discussants:** Catherine Cotrupi, Jessica Davis, and Mary Case, VT Engage

**Respondents:** Mae Hey, Postdoctoral Research Fellow

Miguel Andres Guerra, PhD Candidate, Civil Engineering

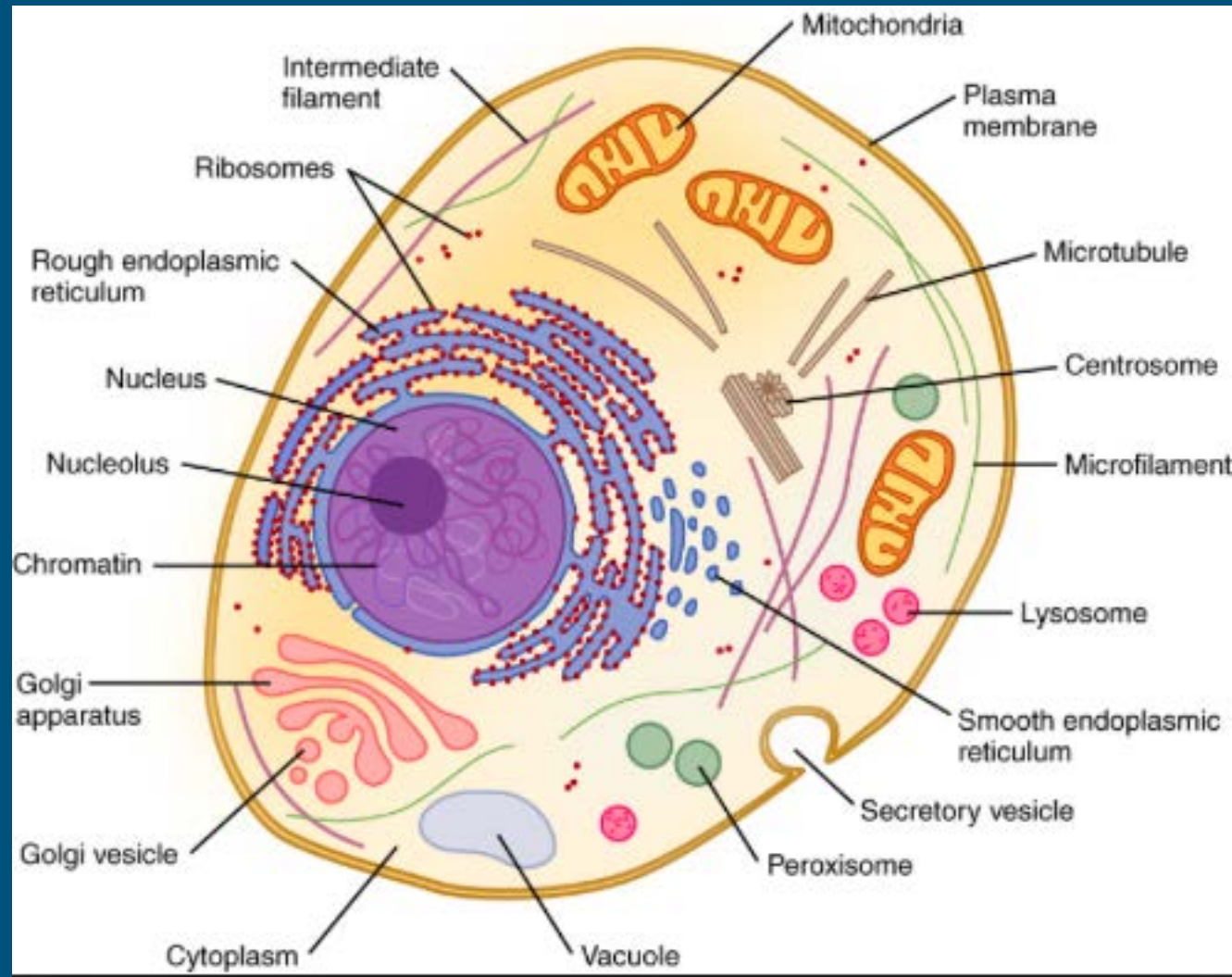
# Today's Objectives

Planting the seed to create  
empowered, resilient, and engaged  
learning experiences  
in partnership with VT Engage

-or-

Sharing information and ideas  
on how to connect our interests  
in collaboration with community!

# Individuation within community helps optimal function

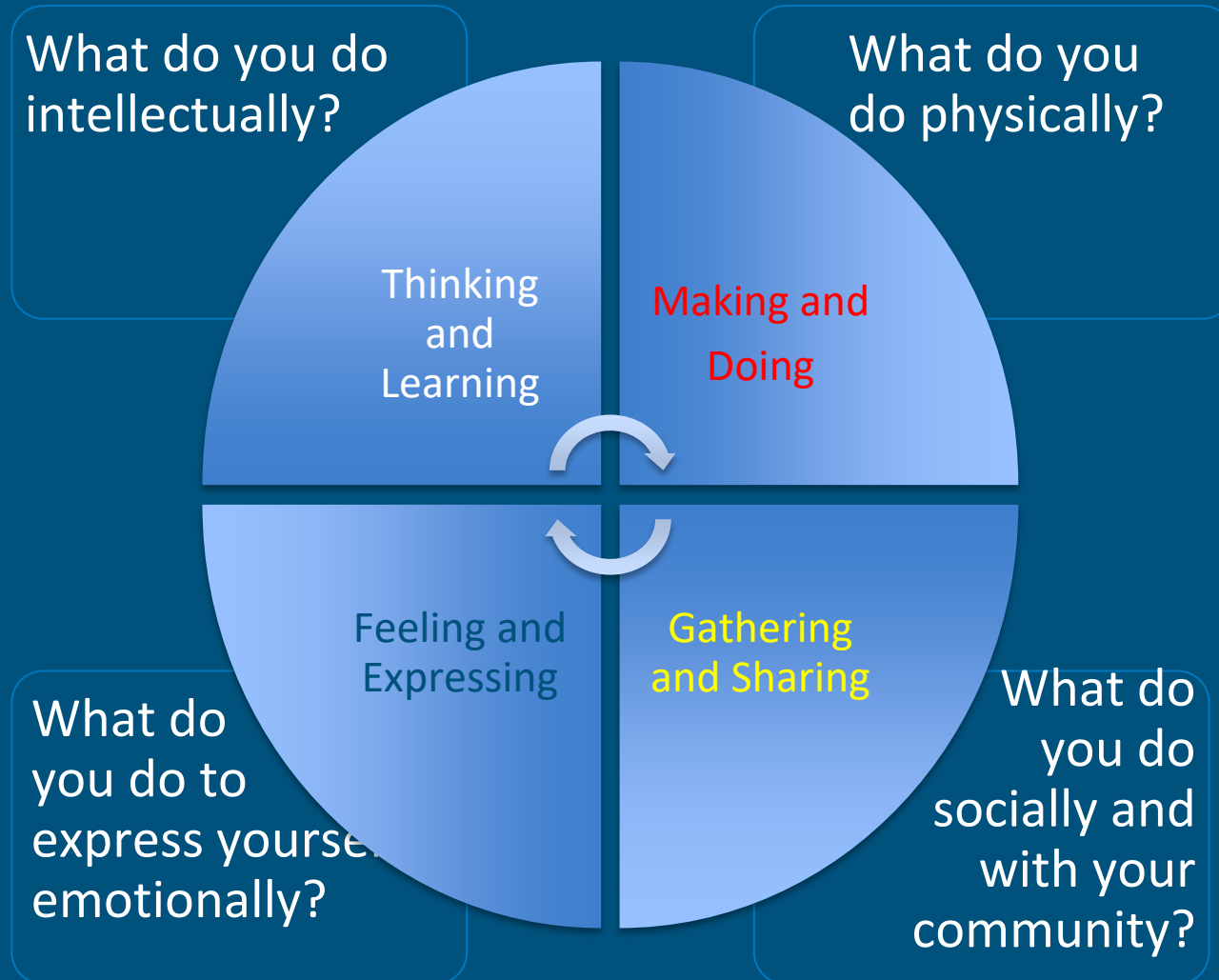


**-activity-**

Find a partner  
and introduce yourself  
the way that the team did.

Include details about your life that speak to your identities and your current purpose.

**-activity-** Use the paper provided to describe yourself using the framework



## VT Engage Mission

We collaborate with communities, students, & faculty to cultivate sustainable, mutually beneficial partnerships through engaged service, learning & reflection.

## VT Engage Core Values

- Authentic community partnership
- Awareness of self & civic identity
- Development of active citizens
- Responsible action grounded in scholarship

# Service-Learning through VT Engage

# Community Connections

- Course requirements and syllabus development
- Community partnership building
  - Articles and readings
    - Reflections
- Assessment and Evaluation
  - Theory

- Local (NRV)
  - Roanoke and beyond
    - Weekend and Weeklong Engagement
      - International partnerships
-

## Traditional

### Service Learning

- **Focus: student experience, curricular outcomes**
  
- “Meeting individual needs but not usually as political action intended to transform structural inequalities”

---

• **Service to an individual**

## Critical

### Service Learning

- **Focus: community-identified need, social change**
  
- Students see themselves as agents of social change and use experiences to address and respond to injustice in communities
  
- Complex thinking and reasoning skills, social responsibility, critical community issues

• **Service for an ideal**

---

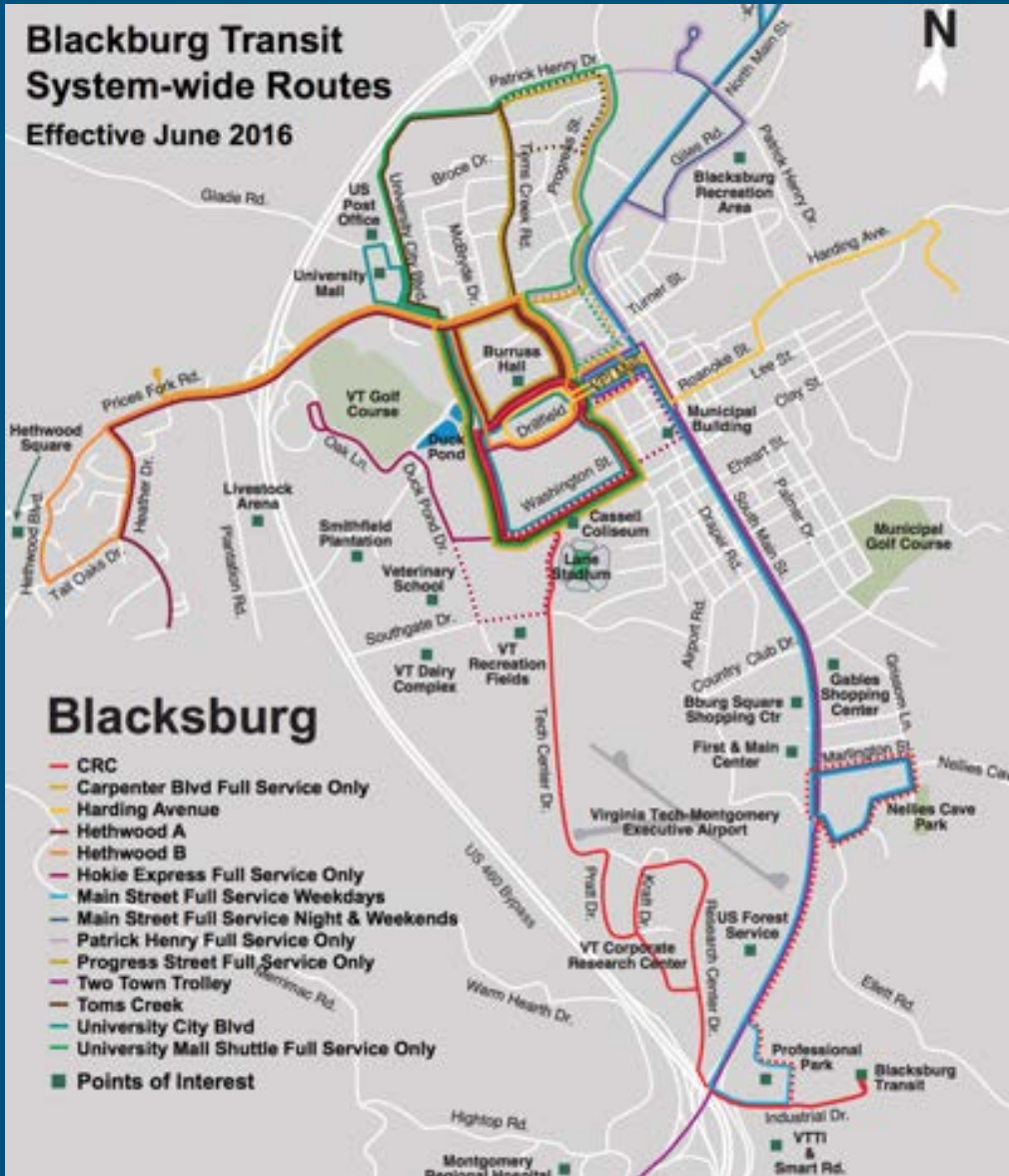


# Teaching User-Centered Design for Sustainable Infrastructure Through Role Play and Experiential Learning

# CASE STUDY

## Blacksburg Transit System-wide Routes

Effective June 2016



## TEACHING MODULE

Lecture 1:

- Traditional approach

Lecture 2:

- Charrette based module

Lecture 1:

- Design thinking Empathy module

**ENGINEERING**

**HUMAN-CENTER DESIGN**

**SUSTAINABILITY**

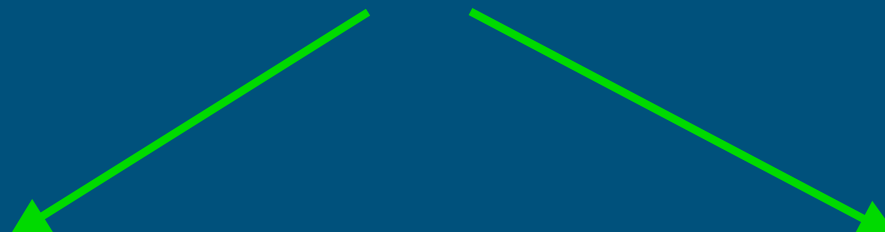
**INFRASTRUCTURE DUAL SYSTEM:  
PRODUCT and SERVICE**

**EMPATHY**

**BREAKING FROM THE  
STATUS QUO**

**ROLE PLAYING  
(Charrette Design)**

**EXPERIENTIAL LEARNING  
(Design Thinking)**





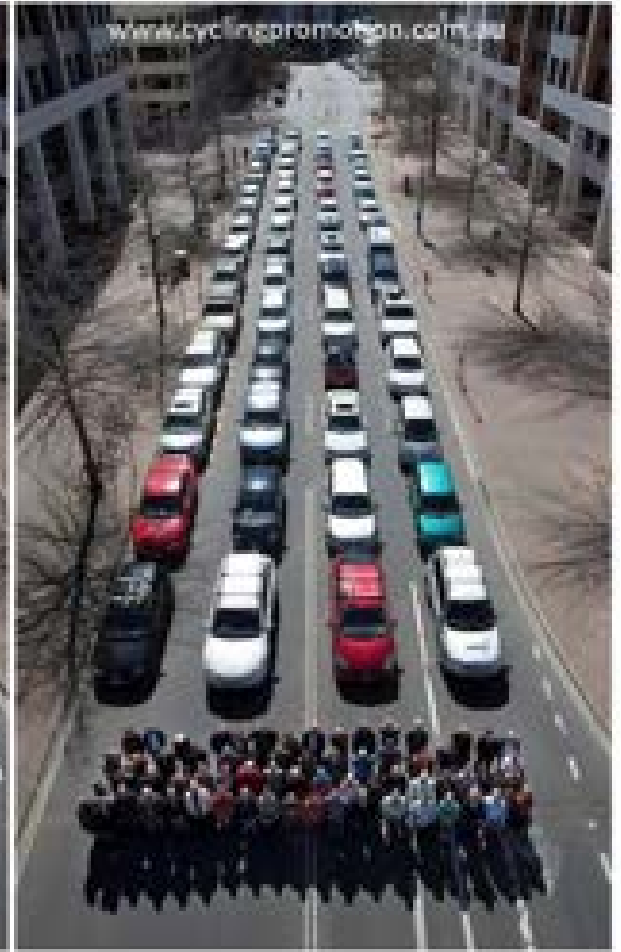
CARPOOLS ONLY  
2 OR MORE PERSONS  
PER VEHICLE  
↓


CLICK IT  
OR TICKET

Culver City  
NEXT 4 EXITS









**DESIGN**

**USER  
EXPERIENCE**



## -activity-

Brainstorm your ideas for your involvement within your communities and the potential for collaboration between your campus-self and your community-self.

*Planting the seed to create empowered, resilient, and engaged learning experiences in partnership with VT Engage*

*Sharing information and ideas on how to connect our interests in collaboration with community!*

# How does your unique interaction with community help to identify or meet a need?

What do you do intellectually?

Thinking and Learning

What do you do physically?

Making and Doing

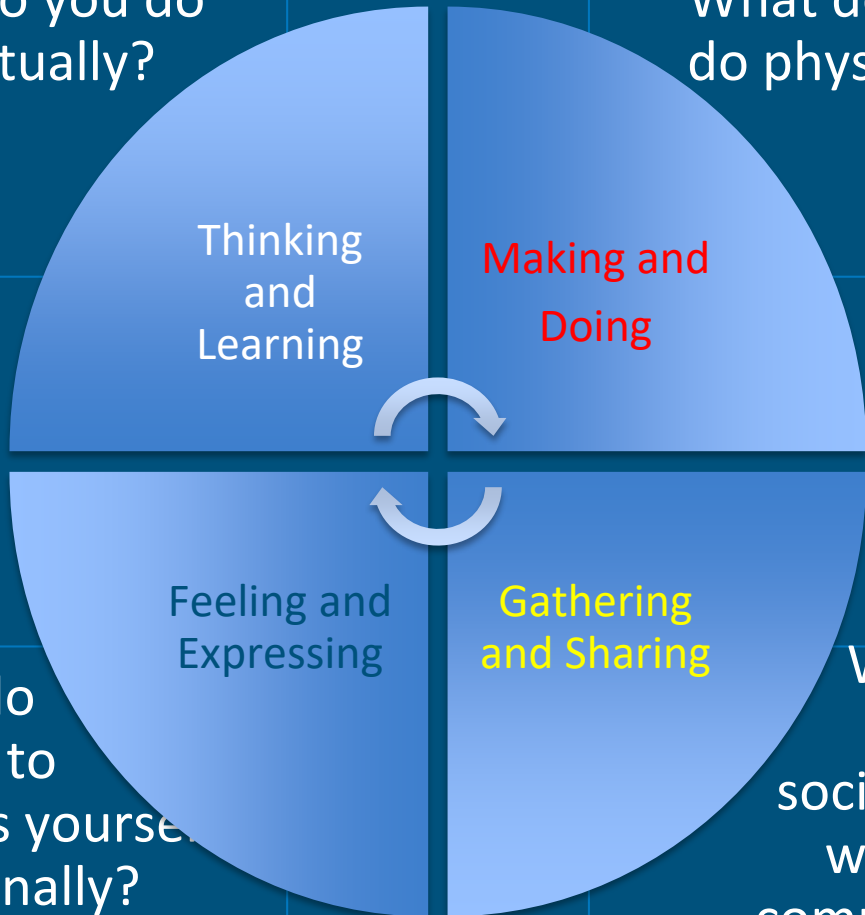
What do you do to express yourself emotionally?

Feeling and Expressing

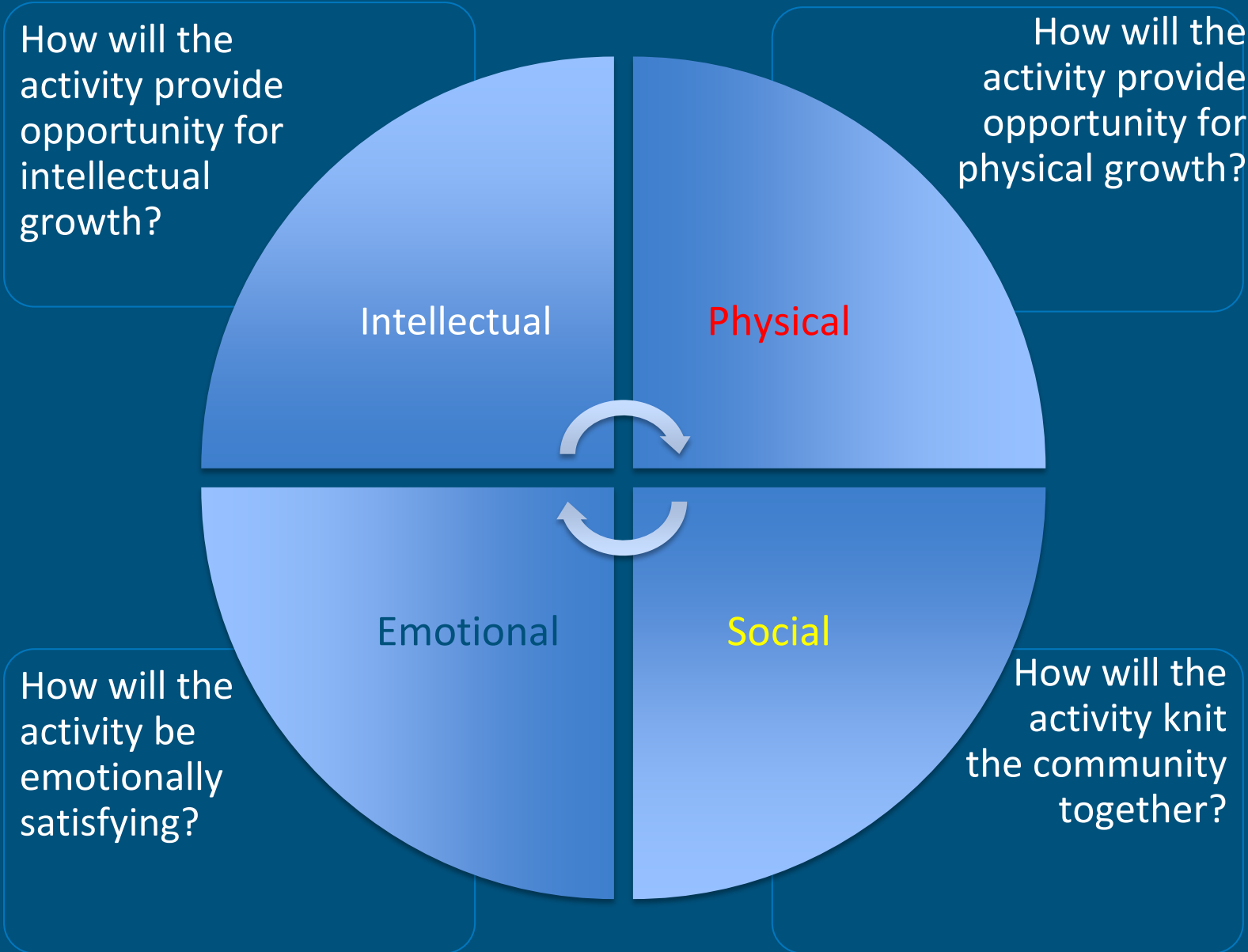
What do you do socially and with your community?

Gathering and Sharing

How can VT Engage enhance this community capacity-building?



# Design the collaboration:



**-Group Work-**