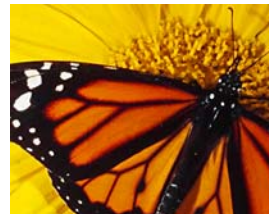


# The WWF Cork Oak Landscapes Programme: PES as a tool to enhance conservation ?

PES Training  
Sofia 19<sup>th</sup> and 20<sup>th</sup> October 2005

Xavier Escuté  
WWF Mediterranean Programme  
Barcelona Office – Across The Waters

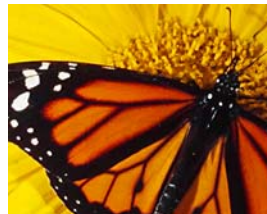




WWF® for a living planet®

## A quick overview on Cork Oak Landscapes

- Around 2,7 million hectares in W-Med
- Portugal, Spain, Algeria, Morocco, Italy, Tunisia and France
- Interaction of human and nature
- Mosaic of high conservation value forests and farmland systems
- Different species: cork oak (*Quercus suber*) but also holm oak (*Q. ilex*) other deciduous oak species, olive trees, stone and maritime pines, maquis ...

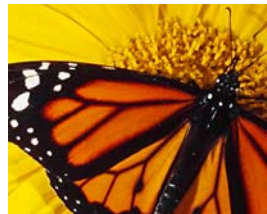




*for a living planet*®

## Values of these ecosystems

- varied wildlife:
  - iberian lynx, iberian imperial eagle, barbary deer, purple flower rhododendron
- source of income for local population:
  - cork extraction and processing (cork stoppers),
  - livestock and agricultural products,
  - wood,
  - non timber forest products (\* how can we value these?)

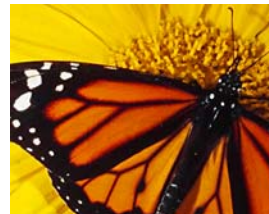




WWF® *for a living planet*®

But the reality is complex...

- Situation in European countries:
  - mostly private owned forests;
  - mostly small properties (specially in Portugal) with landowners absent;
  - highly depopulated areas (land stewardship ?)
  - forest fires is a real issue (800.000ha up in smoke in Portugal in the last 3 years)
- Situation in North African countries:
  - all forest area owned by the estate
  - densely populated forests with not legal but *de facto* use of forest resources



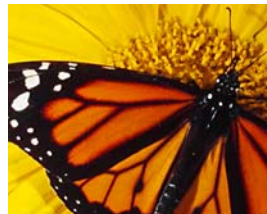


WWF® *for a living planet*®

## Current threats

- Increasing human pressure (overgrazing, over-harvesting)
- forest conversion
- poor forest management practices
- land abandonment
- urban development in coastal areas
- forest fires

+ Climate Change => vulnerability to pests and diseases

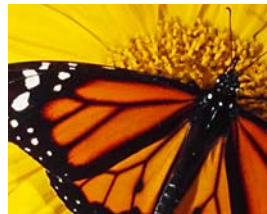




WWF® *for a living planet*®

## Some root causes of forest loss

- perverse subsidies in the north
- poverty and lack of economic opportunities for rural populations in the south
- lack of capacity and investment to integrate environmental and social issues into management and land use planning
- cork market fluctuations (demand...)

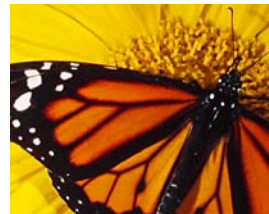




WWF® *for a living planet*®

## Environmental Services

- protection and maintenance of soil and water resources
- water table recharge and run-off control
- fire inhibition
- habitat for biodiversity

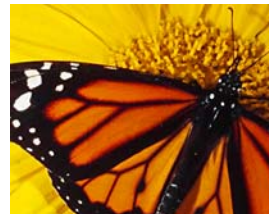




*for a living planet*®

## The Programme's approach

- To protect, manage and restore the natural wealth of cork oak landscapes .... Let's say: ensure the long-term existence of cork oak landscapes
- 5 year programme (started July 04)
- first focus on Port, Sp, Mor and Tun
- based on 4 inter-related pillars
  - capacity building : cooperation and knowledge exchange
  - good practices establishment: pilot projects, FSC certification, publications
  - market support: promote demand of produces from sustainably-managed cork oak landscapes
  - policy / advocacy and EU, national and regional levels







*for a living planet*®

But let's get back to the Environmental Services...

Any ideas on how to internalise them ? Can we use the PES here ?

- protection and maintenance of soil and water resources
- water table recharge and run-off control
- fire inhibition
- habitat for biodiversity

Thanks a lot for your help !!!

