

Peel Tests for Quantifying Adhesion and Toughness: A Review

Michael D. Bartlett,^{1,2*} Scott W. Case,^{2,3} Anthony J. Kinloch,⁴ and David A. Dillard^{2,5}

¹Department of Mechanical Engineering, Soft Materials and Structures Lab, Virginia Tech, Blacksburg, VA 24061, USA.

²Macromolecules Innovation Institute, Virginia Tech, Blacksburg, VA 24061, USA.

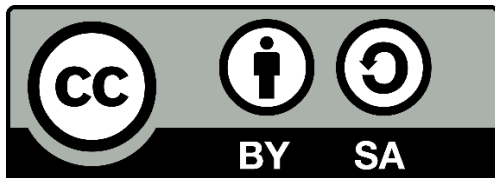
³Via Department of Civil & Environmental Engineering, Virginia Tech, Blacksburg, VA 24061, USA.

⁴Department of Mechanical Engineering, Imperial College London, Exhibition Road, London SW7 2AZ, UK

⁵Department of Biomedical Engineering and Mechanics, Virginia Tech, Blacksburg, VA 24061, USA.

*To whom correspondence should be addressed: mbartlett@vt.edu

© Michael D. Bartlett, Scott W. Case, Anthony J. Kinloch, and David A. Dillard (2023) and issued under a [Creative Commons Attribution-ShareAlike 4.0 International](https://creativecommons.org/licenses/by-sa/4.0/) license.



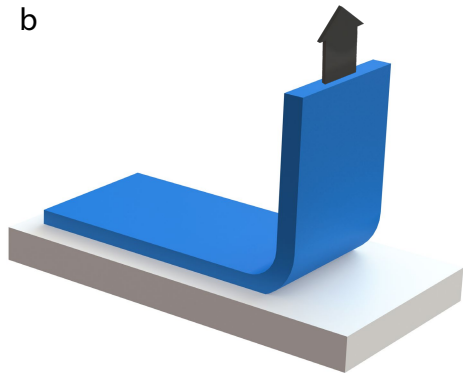
The following images are scheduled to appear in:

Progress in Materials Science

a

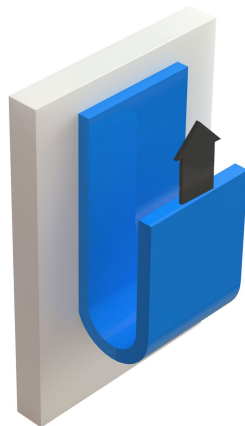


b



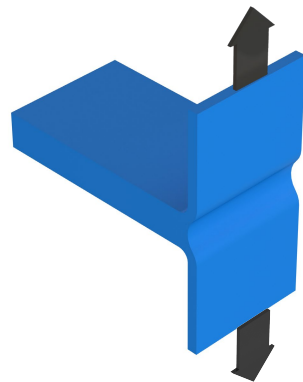
90° peel

c



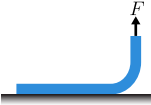
180° peel

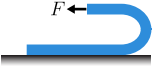
d

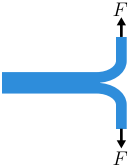


T-peel



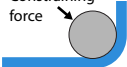


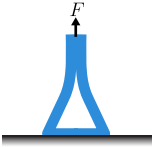




Constraining
force

F

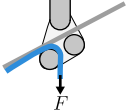






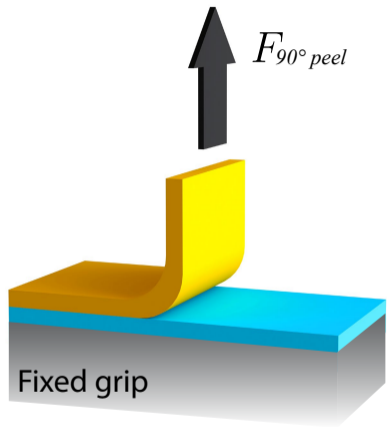








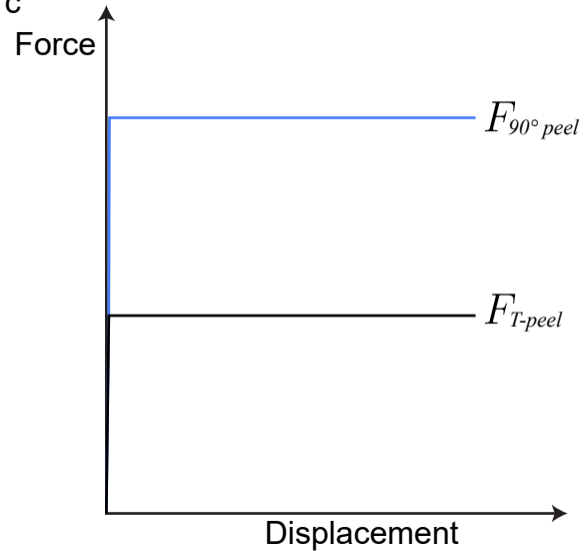
a

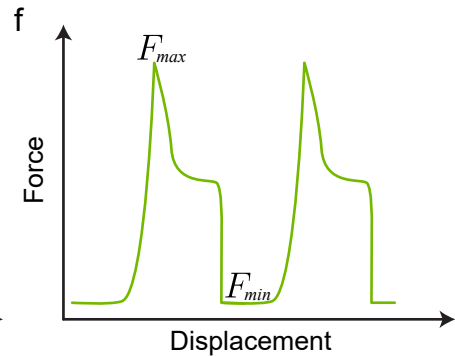
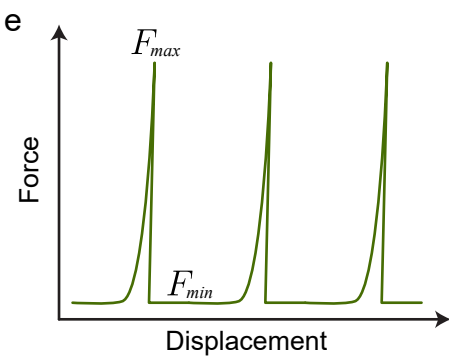
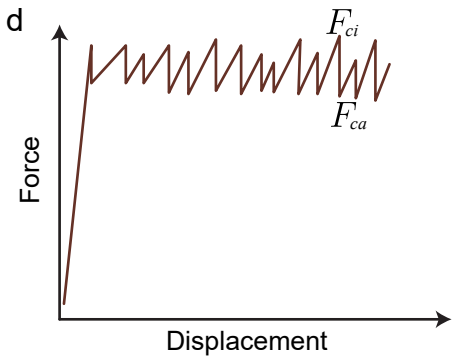
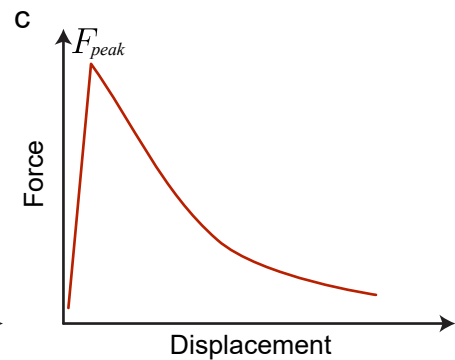
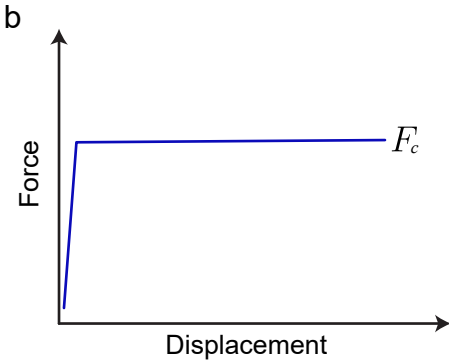
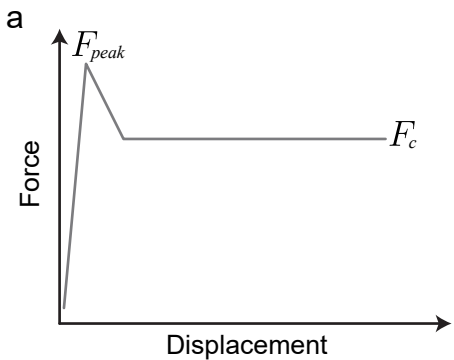


b

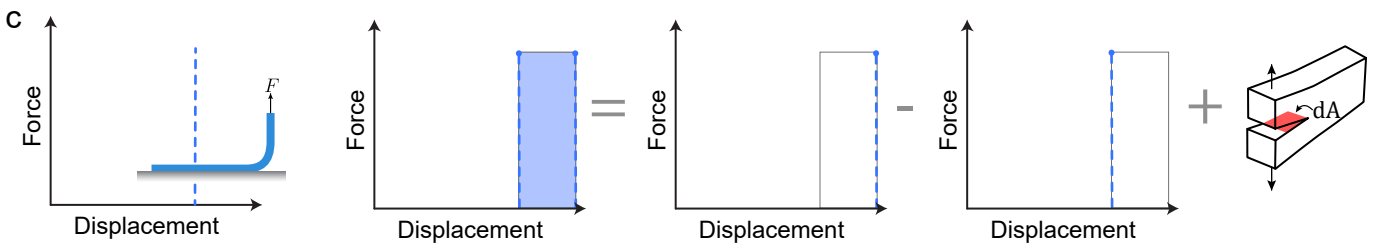
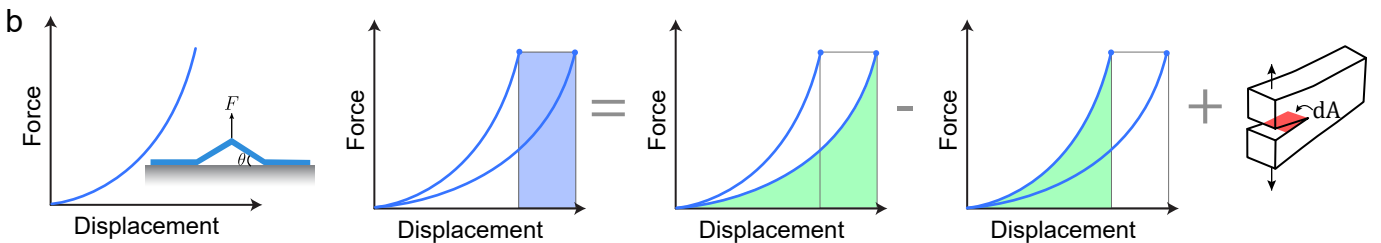
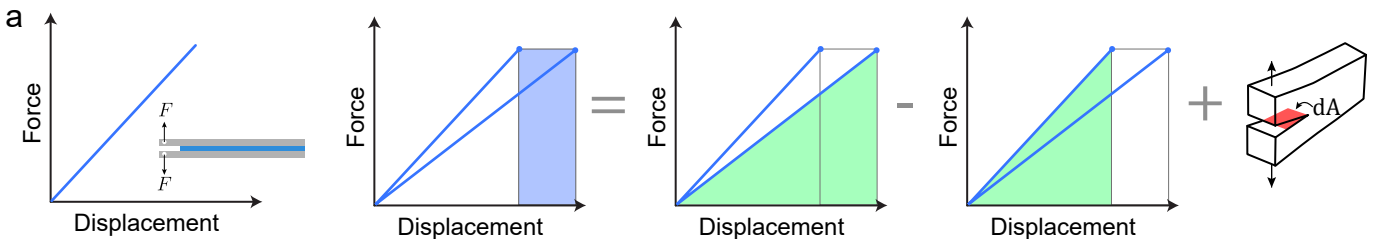


c





$$dW = dU_E + G \cdot dA$$

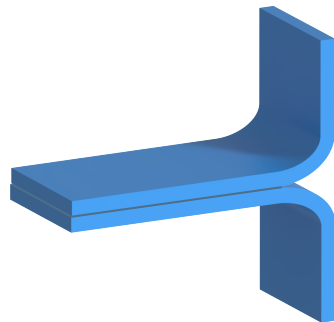


Category II

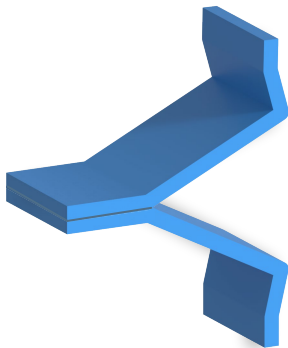


Self-similar

Category I

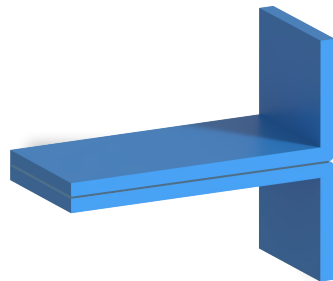


Category III

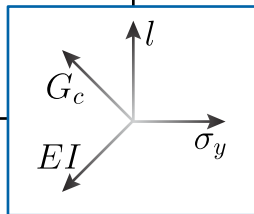


Not Self-similar

Category IV



Inelastic



Elastic

