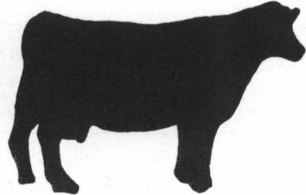


LD
5655
A762
AM. 50
1980
REV
E. 2

5

dairy guidelines

EXTENSION DIVISION VIRGINIA POLYTECHNIC INSTITUTE AND STATE UNIVERSITY BLACKSBURG, VIRGINIA



Series 50 - Revised January 1980



REPRODUCTION ANALYSIS COST OF "DAYS OPEN"

V.P.I. & S.U. LIBRARY

Joseph A. Lineweaver
Extension Specialist, Dairy Reproduction

BLACKSBURG, VIRGINIA

Excessive days open cost Virginia dairymen an estimated \$92.21 per cow during the 1978-79 DHI year. That means that during last year the loss for Virginia's 136,000 Grade "A" cows was \$12,540,000.

The three following pages summarize the analysis conducted on 877 herds completing the 1978-79 DHI year. Page two gives the analysis by DHI Association and pages three and four are by county.

This analysis was conducted using values from the DHI program, herd input collected in the September 1979 reproduction survey, and estimated dollar values for the 1978-79 DHI year (survey averages). These sources of values or dollar estimates are as follows:

<u>ITEM</u>	<u>SOURCE OF VALUES USED</u>
AVERAGE DAYS OPEN	DHI records
CWT's OF MILK LOST	Calculated from days open
BLEND MILK PRICE	DHI records
REPLACEMENT COST	Survey value or \$1180 estimate
CULL SLAUGHTER VALUE	Survey value or \$597 estimate
NO. REPRODUCTIVE CULLS	DHI records
TOTAL NO. COWS	DHI records
AVERAGE A.I. SERVICE COST	Survey value or \$13 estimate
ADDED VET & MEDICINE COST PER COW	\$5 estimate for extra cost for problem cows
YEARLY AVERAGE SERVICES PER COW	DHI records
AVERAGE VALUE OF CALVES BORN	Survey value or \$163 estimate
LOSS PER COW PER YEAR--includes loss in production, A.I. costs above 1.5 services, veterinary and medicine cost for problem cows, calf losses by not having a 365-day calving interval, and cost of replacing reproductive culls above 5% of the herd.	
LOSS PER HERD PER YEAR--is your "cow loss" times the "number of cows in your herd."	

Virginia Cooperative Extension Service programs, activities, and employment opportunities are available to all people regardless of race, color, religion, sex, age, national origin, handicap, or political affiliation.

AN EQUAL OPPORTUNITY/AFFIRMATIVE ACTION EMPLOYER

Issued in furtherance of Cooperative Extension work, Acts of May 8 and June 30, 1914, and September 30, 1977, in cooperation with the U. S. Department of Agriculture. W. R. Van Dresser, Dean, Extension Division, Cooperative Extension Service, Virginia Polytechnic Institute and State University, Blacksburg, Virginia 24061; M. C. Harding, Sr., Administrator, 1890 Extension Program, Virginia State University, Petersburg, Virginia 23803.

DHI ASSOCIATION AVERAGES
COST OF DAYS OPEN 1979

Association	Rank		No. Herds	Days Open	Change From 1978	Loss/Cow/Year	% Loss From					Loss/Herd/Year
	79	78					Prod.	A.I.	Vet & Med.	Calf	Repl.	
Botetourt	1	1	10	104	-2	22.82	19.1	18.3	21.9	31.9	8.8	1607.
Lynchburg	2	5	31	121	-0-	54.42	55.7	8.3	9.2	17.0	9.8	4371.
Russell	3	3	5	121	+1	56.60	55.6	2.5	8.8	23.3	9.8	4052.
Smyth	4	30	18	129	-8	67.52	63.5	2.8	7.4	26.3	0.0	5331.
Halifax-Pitt.	5	7	12	125	+8	70.05	48.9	7.1	7.1	22.3	14.6	9970.
Culpeper	6	20	31	129	-1	73.14	58.1	5.0	6.8	22.4	7.7	8555.
Cumberland	7	14	13	132	-0-	73.36	67.1	3.5	6.8	19.4	3.1	6445.
Augusta	8	17	74	124	-3	77.89	44.3	3.1	6.4	19.7	26.5	6710.
Prince William	9	2	9	124	+9	82.69	44.0	3.3	6.0	18.4	28.3	9795.
Carroll	10	8	12	113	-13	84.05	21.9	1.2	5.9	10.7	60.2	4840.
Clarke-Frederick	11	15	18	136	+4	84.33	65.4	5.0	5.9	23.6	0.0	9177.
Wythe	12	27	23	121	-9	86.57	36.3	3.6	5.8	16.6	37.7	6655.
Grayson	13	19	15	121	-11	87.70	35.9	2.2	5.7	13.4	42.8	7039.
Bedford	14	22	24	123	+5	90.44	37.3	4.3	5.5	16.3	36.6	7899.
Alleghany-Rock.	15	18	21	124	-0-	90.70	38.5	3.0	5.5	16.0	36.9	7554.
Amelia	16	6	17	120	-1	95.35	32.1	6.5	5.2	52.8	3.3	8138.
Floyd	17	-	7	125	--	95.71	38.4	3.5	5.2	15.8	37.1	4895.
Franklin	18	11	75	119	-1	98.40	28.8	3.3	5.1	12.4	50.4	7458.
Madison	19	28	20	133	-6	98.67	53.0	1.0	5.1	13.7	27.2	9832.
Shenandoah-Page	20	10	22	136	+10	99.07	53.4	.9	5.0	20.7	19.9	10218.
Rockingham	21	13	108	126	+1	100.06	36.2	2.7	5.0	16.5	39.6	8071.
Nottoway	22	33	13	129	-4	101.36	45.3	5.8	4.9	15.9	28.1	10510.
Montgomery	23	25	25	128	+1	102.82	41.0	3.7	4.9	20.8	29.7	6601.
Southeast	24	34	21	133	-4	105.95	52.4	3.1	4.7	15.2	24.5	9687.
Briery	25	9	18	137	+11	109.63	52.1	2.2	4.6	16.9	24.3	9837.
Washington	26	21	42	132	-0-	111.71	41.9	2.8	4.5	16.9	33.9	9200.
Southside	27	32	13	141	+4	113.01	56.3	4.4	4.4	27.7	7.2	14083.
Patrick	28	29	10	136	+2	113.67	48.0	1.7	4.4	16.2	29.7	10310.
Spotsylvania	29	26	16	128	-5	118.87	36.5	2.1	4.2	11.9	45.3	14874.
Fauquier	30	23	27	145	+10	119.61	57.9	2.2	4.2	22.0	13.7	14619.
Orange	31	12	15	135	+9	121.74	43.8	2.6	4.1	17.9	31.5	15931.
Powhatan-Gooch.	32	31	17	135	-1	126.36	43.7	1.2	4.0	13.7	37.5	12235.
Pulaski	33	16	20	122	-0-	126.79	25.8	1.4	3.9	10.6	58.3	8780.
Hanover	34	--	6	119	--	130.12	22.3	3.4	3.8	9.2	61.3	21036.
Loudoun	35	37	31	132	-4	133.53	35.7	4.7	3.7	14.3	41.5	11161.
Dinwiddie	36	36	10	135	-1	137.29	39.4	2.5	3.6	9.8	44.7	10585.
Tri-Co.	37	35	14	133	+1	139.88	36.3	4.3	3.6	11.6	44.2	24389.
Roanoke	38	4	10	133	+16	145.38	34.4	2.6	3.4	16.6	42.9	10250.
State Average			877	128	-0-	98.21	42.6	3.1	5.1	17.6	31.6	8898.

COUNTY AVERAGES

COST OF DAYS OPEN 1979

Association	Rank		No. Herds	Days Open	Change From 1978	Loss/ Cow/ Year	% Loss From					Loss/ Herd/ Year
	79	78					Prod.	A.I.	Vet & Med.	Calf	Repl.	
Campbell	4	9	18	121	-0-	52.84	57.2	14.4	9.5	18.3	.6	4547.
Botetourt	5	8	13	118	-1	52.84	50.6	5.5	9.5	25.4	9.0	4223.
Russell	7	2	5	121	+5	56.60	55.6	2.5	8.8	23.3	9.8	4052.
Appomattox	9	6	10	119	+2	60.97	45.1	1.7	8.2	13.7	31.3	4128.
Smyth	12	48	18	129	-8	67.52	63.5	2.8	7.4	26.3	0.0	5331.
Halifax	14	34	6	125	-2	69.65	54.1	7.9	7.2	17.8	13.0	9519.
Culpeper	15	29	26	129	-0-	69.87	60.5	4.1	7.2	23.5	4.7	9003.
Pittsylvania	16	20	6	129	+11	70.54	54.7	3.0	7.1	24.7	10.6	13250.
Cumberland	17	10	7	130	+5	70.60	64.9	.9	7.1	23.6	3.5	7150.
Grayson	18	30	12	113	-20	70.73	26.7	3.1	7.1	12.5	50.6	5293.
Nansemond	19	4	3	124	+10	71.49	55.1	15.6	7.0	22.3	0.0	8555.
Augusta	20	26	70	123	-3	73.33	44.7	3.0	6.8	20.0	25.5	6177.
Carroll	21	14	14	113	-10	74.59	24.7	1.6	6.7	12.3	54.6	4582.
Albemarle	22	17	4	118	-8	76.50	34.2	6.0	6.5	19.4	33.9	11168.
Prince Edward	23	38	7	129	-10	77.40	57.9	3.5	6.5	17.0	15.1	4500.
Bland	24	15	5	116	-1	77.93	28.0	3.2	6.4	11.8	50.7	6172.
Roanoke	26	18	5	131	+10	83.02	56.3	8.2	6.0	29.5	0.0	4616.
Clarke	27	31	16	138	+4	87.12	65.6	4.9	5.7	23.7	0.0	9480.
Rockbridge	28	43	15	122	-2	88.82	35.9	3.6	5.6	15.4	39.5	6715.
Bedford	29	36	24	123	+5	90.44	37.3	4.3	5.5	16.3	36.6	7899.
Shenandoah	30	19	19	134	+12	94.79	52.8	.1	5.3	20.9	21.0	10212.
Spotsylvania	32	44	11	125	-6	97.43	39.4	3.0	5.1	14.5	38.0	10833.
Franklin	33	21	72	119	-1	97.53	29.1	3.5	5.1	12.5	49.8	7395.
Madison	34	54	24	132	-8	97.59	51.8	1.9	5.1	13.8	27.4	8970.
Virginia Beach	35	53	3	135	-4	97.89	61.1	3.8	5.1	21.5	8.5	15108.
Prince William	36	1	8	127	+14	100.20	41.2	2.6	5.0	16.5	34.8	11047.
Rockingham	38	23	107	126	+1	100.76	36.0	2.7	5.0	16.3	40.0	8146.
Southampton	39	57	3	137	-8	101.34	53.6	5.4	4.9	16.1	19.9	4223.
Amelia	40	13	16	121	-0-	101.95	31.6	6.2	4.9	55.1	2.3	8347.
King William	41	46	6	126	+6	102.90	38.7	7.4	4.9	10.9	38.1	16378.
Page	43	56	4	146	-4	103.67	64.9	3.5	4.8	23.8	3.0	7334.
Nottoway	45	40	13	132	+6	104.90	48.6	5.8	4.8	16.0	24.7	10215.
Brunswick	46	33	9	138	+9	106.06	53.9	3.3	4.7	26.5	11.5	9687.
Wythe	47	55	21	129	-5	107.44	41.7	2.5	4.7	17.1	34.0	8411.
Dinwiddie	48	65	8	127	-17	111.05	37.7	3.9	4.5	10.2	43.6	10314.
Washington	49	39	42	132	-0-	111.71	41.9	2.8	4.5	16.9	33.9	9200.
Montgomery	50	45	28	129	+3	113.23	38.7	3.3	4.4	19.3	34.3	7142.
Patrick	51	49	10	136	+2	113.67	48.0	1.7	4.4	16.2	29.7	10310.
Charlotte	52	37	15	140	+7	113.92	54.1	2.0	4.4	16.5	23.0	11506.
Powhatan	53	42	13	130	-3	115.83	41.1	1.4	4.3	13.8	39.4	11361.
Louisa	54	24	5	132	+8	116.57	41.3	2.2	4.3	15.6	36.6	8510.
Fauquier	55	41	30	145	+9	116.60	59.5	2.4	4.3	22.2	11.6	14276.
Goochland	56	61	4	136	-9	124.95	44.2	2.4	4.0	11.4	38.0	15181.
Orange	57	22	13	135	+9	126.53	42.3	2.5	4.0	17.3	33.9	16848.

Association	Rank		No. Herds	Days Open	Change From 1978	Loss/Cow/Year	% Loss From					Loss/Herd/Year
	79	78					Added	Vet &	Med.	Calf	Repl.	
Floyd	59	7	10	121	+7	129.23	23.5	.9	3.9	10.4	61.3	8620.
Pulaski	60	32	19	123	-0-	129.52	26.5	1.6	3.9	11.0	57.1	9142.
Hanover	62	52	9	120	+11	133.34	22.6	3.7	3.7	10.2	59.7	22861.
Loudoun	63	59	26	129	-1	136.72	31.5	4.7	3.7	13.8	46.4	10654.
Fairfax	64	68	4	145	-23	139.78	47.0	5.3	3.6	15.1	29.0	15341.
Mecklenburg	65	58	3	143	+6	147.27	47.6	11.3	3.4	33.4	4.3	23661.
Greene	66	50	4	141	-1	156.41	41.9	0.0	3.2	13.2	41.7	15054.
Chesapeake	68	63	5	144	+8	190.80	40.7	1.0	2.6	6.4	49.2	14997.
State Average			877	128	-0-	98.21	42.6	3.1	5.1	17.6	31.6	8898.

Alleghany

Amherst

Buckingham

Caroline

Fluvanna

Frederick

Gloucester

Henrico

Henry

Isle of Wight

James City

King George

Lunenburg

Middlesex

Nelson

Prince George

Richmond

Surry

Newport News

Westmoreland

Counties with only one or two herds listed alphabetically.

Total of 20 counties.

Total of 29 herds.