

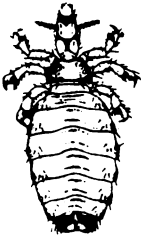
INSECT CONTROL RECOMMENDATIONS

CONTROL SERIES 8

REVISED JANUARY 1981

EXTERNAL PARASITES OF SWINE

by
J. E. Roberts, Sr.
Extension Specialist, Entomology

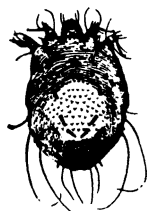
Pests	Insecticide and Percent Dilution	How to Mix and Apply	Precautions and Days Between Last Application and Slaughter
SPRAYS			
	Lice		
	Coumaphos (Co-Ral) 0.06% spray	1 gal. 10 gal. 2 tsp. 3 oz. 25% WP 25% WP	See footnote -1, page 2 for special precautions pertaining to use of Coumaphos. 0 days
	Malathion 0.5% spray	1 gal. 10 gal. 2 tbsp. 3/4 pt. 57% EC 57% EC	Treat every 2 to 3 weeks, if needed. Do not use on animals less than 1 month old. Sprayed hogs should be kept out of sun and wind for a few hours after treatment. 0 days.
	Stirophos (Rabon) 0.5%	1 gal. 10 gal. 1 1/4 oz. 12 oz. 50% WP 50% WP	Repeat in 2 weeks if necessary. 0 days
	Crotoxyphos (Ciodrin) 1% + Dichlorvos (Vapona) 0.25%	1 gal. 10 gal. 2-3/4 oz. 1-3/4 pt.	Repeat application as necessary for control, but not more often than once every 7 days. 0 days
	Dioxathion (Delnav) 0.15%	1 gal. 10 gal. 4 tsp. 6 1/2 oz. 21% EC 21% EC	Do not treat swine less than 3 months old. Do not reapply within 2 weeks. 0 days
		Spray thoroughly, amount depending on animal size and hair length. It is best with 2 applications 10 days to 2 weeks apart.	

EXTENSION DIVISION • VIRGINIA POLYTECHNIC INSTITUTE AND STATE UNIVERSITY • BLACKSBURG, VIRGINIA 24061

Virginia Cooperative Extension Service programs, activities, and employment opportunities are available to all people regardless of race, color, religion, sex, age, national origin, handicap, or political affiliation. An equal opportunity/affirmative action employer.

Issued in furtherance of Cooperative Extension work, Acts of May 8 and June 30, 1914, and September 30, 1977, in cooperation with the U. S. Department of Agriculture, W. R. Van Dresser, Dean, Extension Division, Cooperative Extension Service, Virginia Polytechnic Institute and State University, Blacksburg, Virginia 24061; M. C. Harding, Sr., Administrator, 1880 Extension Program, Virginia State University, Petersburg, Virginia 23803.

Pests	Insecticide and Percent Dilution	How to Mix and Apply	Precautions and Days Between Last Application and Slaughter
Mange	Malathion 0.5%	1 gal. 10 gal. 2 tbsp. 3/4 pt. 57% EC 57% EC	Treat every 2 to 3 weeks, if needed. Do not use on animals less than 1 month old. Sprayed hogs should be kept out of sun and wind for a few hours after treatment. 0 days.
	Lindane 0.06%	10 gal. 25 gal. 2 1/2 oz. 6 oz. 25% WP 25% WP	Do not treat pigs before weaning. 30 days for spray 60 days for dip. LINDANE MAY BE SUBJECT TO IMMEDIATE CANCELLATION.



HAND DUSTING

Lice	Malathion	4% to 5% dust. no mixing necessary. Ready-to-use. Dust large animals thoroughly. use 1/4 to 1/2 tbsp. per animal for pigs less than 1 month old.	Treat every 2 to 3 weeks, if needed. 0 days
	Coumaphos (Co-Ral)	1% dust. No mixing necessary. Ready-to-use. Do not use more than 1 oz. of 1% per head. Dust evenly into hair on head, neck shoulders and tail head.	Do not use more frequently than every 10 days. 0 days.
	Stiropfos (Rabon) 3%	Use 3 to 4 oz. per animal Repeat as necessary, but not more often than once every 14 days. In severe infestations both animals and bedding should be treated. Use 1 lb./150 sq. ft. of bedding	0 days

POUR-ONS

Lice	Fenthion (Tiguvon)	No mixing necessary. Ready-to-Use. Apply at rate of 1/2 fluid oz. per 100 lbs. of body weight. Pour the correct amount of solution uniformly along the animals back starting just behind the ears and continuing to the rump.	14 days. Do not treat sick, convalescent or stressed animals. Do not use this product on animals at the same time or within a few days of treatment with other cholinesterase inhibiting pesticides, drugs, or chemicals.
------	--------------------	---	---

-1 Do not treat animals less than 3 months old, or sick, convalescent or stressed animals. Do not dip or spray animals for 10 days before or after shipping or weaning, or after exposure to contagious or infectious diseases. Do not spray in confined non-ventilated area. Do not apply in conjunction with oral drenches or other internal medications, or with natural or synthetic pyrethroids or their synergists or with other organic phosphates. Do not use this product on animals simultaneously or within a few days before or after treatment with or exposure to cholinesterase inhibiting drugs, pesticides, or chemicals.

AG - Indicates the proper EC formulation for agricultural uses; AI - Active Ingredient; AI/Gal. - Active Ingredient per Gallon; D - Dust; E - Emulsifiable; EC - Emulsifiable Concentrate; EL - Emulsifiable Liquid; F - Flowable; fl. oz. - fluid ounce; G - Granular; gal. - gallon; gal/100 - gallon per 100; in. - inch; IU - International Unit; lb. - pound; lb./gal. - pounds per gallon; LC - Liquid Concentrate; liq. sol. - liquid solution; LS - Liquid Solution or Suspension; MG - Milligram; oz. - ounce; pt. - pint; qts. - quarts; S - Soluble or Sprayable; SC - Soluble Concentrate; SP - Sprayable or Soluble Powder; sq. ft. - square ft.; tbsp. - tablespoon; tsp. - teaspoon; W - Wettable; WP - Wettable Powder

Trade and brand names are used only for the purpose of information and the Virginia Cooperative Extension Service does not guarantee nor warrant the standard of the product, nor does it imply approval of the product to the exclusion of others which may also be suitable.

KEYS TO PROPER USE OF PESTICIDES

1. Read the label on each pesticide container before each use. Follow instructions to the letter; heed all cautions and warnings, and note precautions about residues.
2. Keep pesticides in the containers in which you bought them. Put them where children or animals cannot get to them, preferably under lock and away from food, feed, seed, or other material that may become harmful if contaminated.
3. Dispose of empty containers in the manner specified on the label.

SEE YOUR DOCTOR IF SYMPTOMS OF ILLNESS OCCUR DURING OR AFTER USE OF PESTICIDES.

COOPERATIVE EXTENSION SERVICE
U. S. DEPARTMENT OF AGRICULTURE
VIRGINIA POLYTECHNIC INSTITUTE
AND STATE UNIVERSITY
BLACKSBURG, VIRGINIA 24061

OFFICIAL BUSINESS
PENALTY FOR PRIVATE USE, \$300

POSTAGE AND FEES PAID
U. S. DEPARTMENT OF AGRICULTURE
AGR-101
Third Class
Bulk Rate

